

DEPARTMENT OF ENVIRONMENTAL QUALITY
AIR QUALITY DIVISION
ACTIVITY REPORT: Self Initiated Inspection

B158126300

FACILITY: MIDWEST GRAVEL INC		SRN / ID: B1581
LOCATION: EAST BREITUNG AVENUE, IRON MOUNTAIN		DISTRICT: Upper Peninsula
CITY: IRON MOUNTAIN		COUNTY: DICKINSON
CONTACT: Bob Broullire , Operator		ACTIVITY DATE: 07/24/2014
STAFF: Joe Scanlan	COMPLIANCE STATUS: Compliance	SOURCE CLASS: MINOR
SUBJECT: Conducted an unannounced inspection of concrete batch plant on 7/24/2014.		
RESOLVED COMPLAINTS:		

Facility: Midwest Gravel, Inc.

Inspection Date: 7/24/2014

Compliance Status: In Compliance

DEQ-AQD Staff Present: Joseph Scanlan

I conducted an unannounced inspection of this concrete batch plant on 7/24/2014. My contact at the facility was Mr. Bob Broullire, concrete manager.

Mr. Broullire stated that business is a little better than last year, but not by much. The plant produced 2741.5 cubic yards of concrete in 2013 and as of 7/14/2014 had produced a total of 1076 cubic yards for 2014. The plant did not operate during the winter months. There were no trucks loading at the time of my inspection and none scheduled for that morning. The plant continues to use both slag and cement in their mixes.

The baghouse on top of the loading area is equipped with a shaker system for maintaining bags. Bags were inspected prior to startup in the spring and a few were replaced as necessary. Mr. Broullier started the shaker system and I could distinctly hear the unit operating.

The entire yard and driveways had been paved since the previous inspection in 2009 and fugitive dust from ingress/egress to the facility is essentially nonexistent. Water is applied as needed with a cement truck to the remaining unpaved area behind the facility. The loading area is mostly enclosed, encasing almost the entire rear half of a truck as it is loading.

No violations of the Air Pollution Control Rules or PTI #438-99 were observed during this inspection.

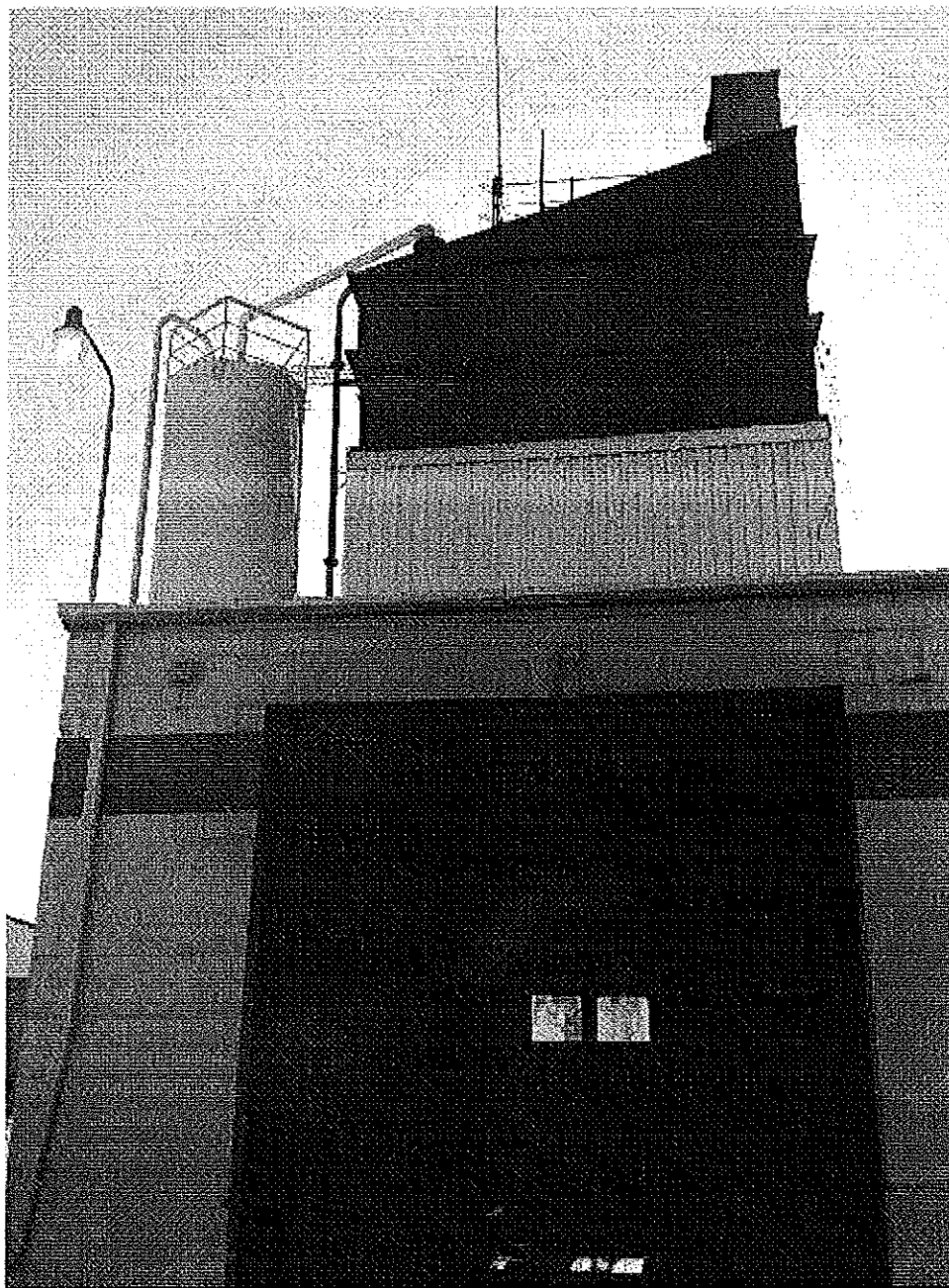


Image 1(7/24/2014) : Silo with baghouse on top of loading area. Shaker unit is the small unit in the upper right of the frame.

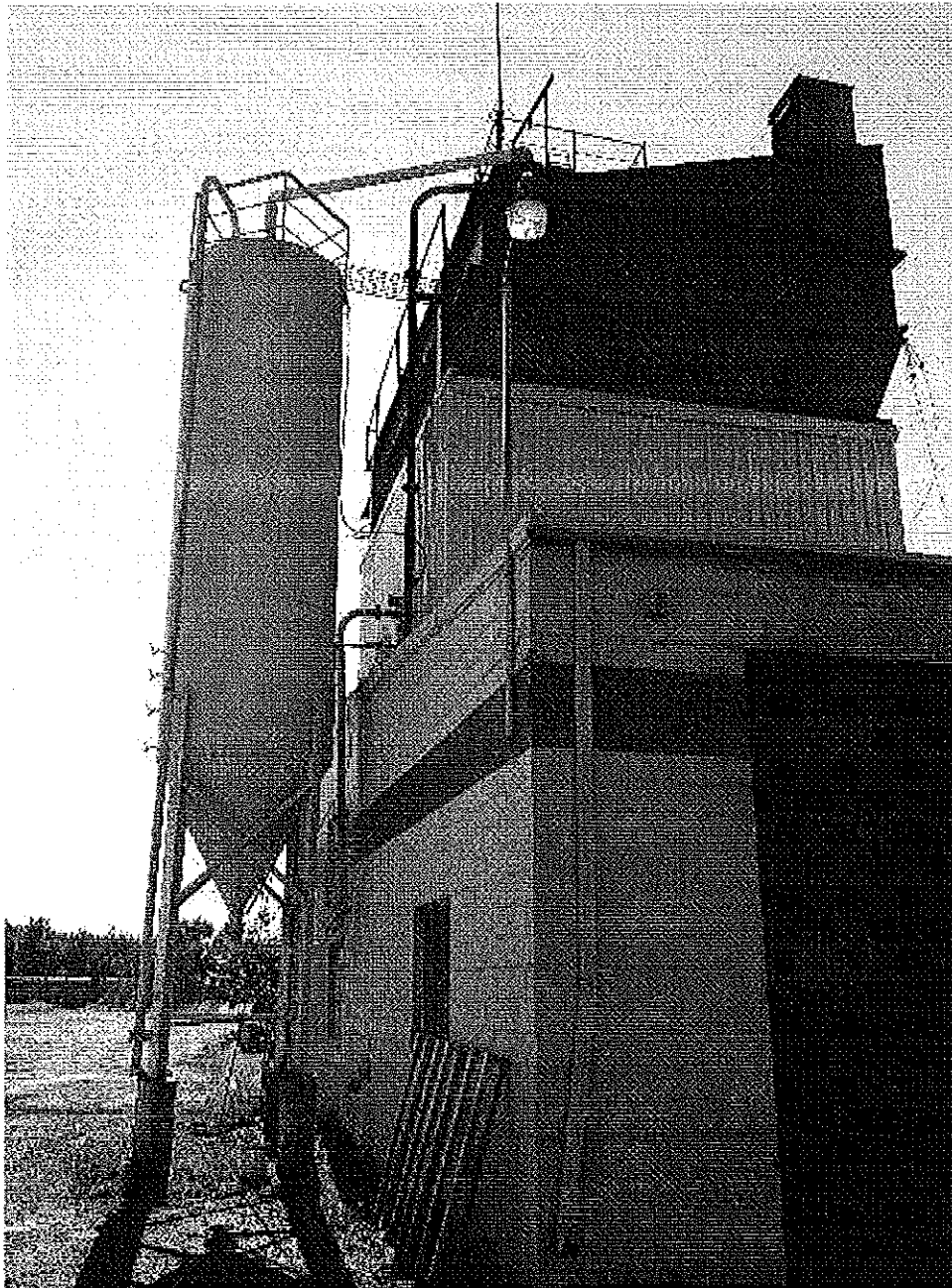


Image 2(7/24/2014) : Silo

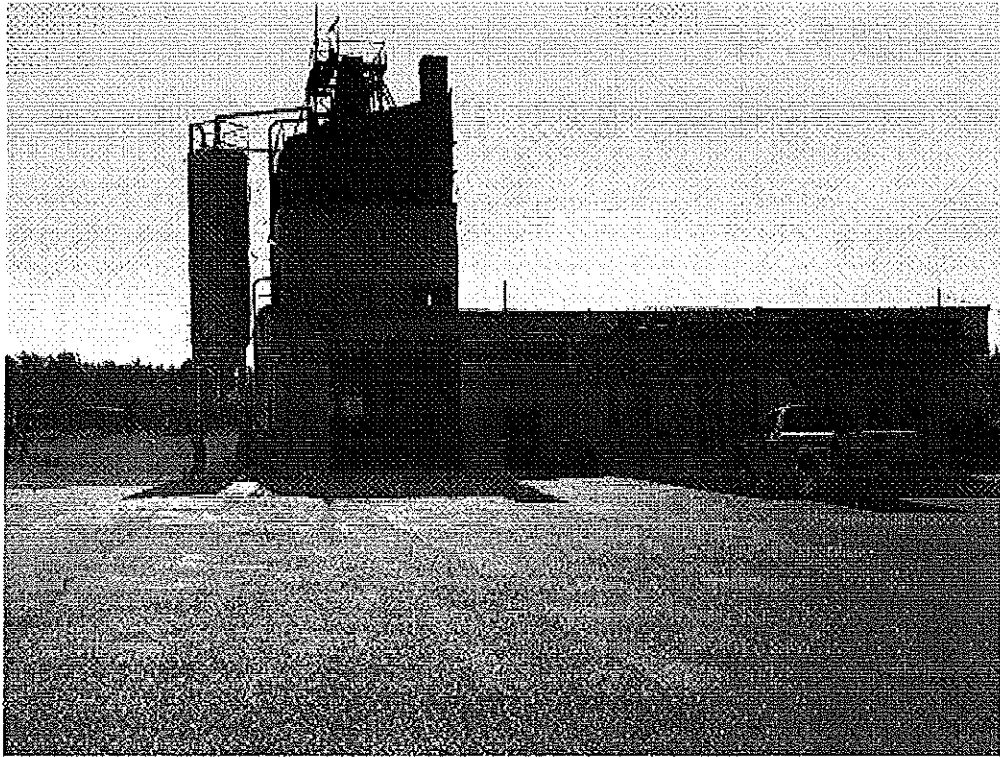


Image 3(7/24/2014) : Entire facility. Driveways of off Carpenter Street, yard, and loading are paved in front of plant.

NAME Joseph S. [Signature]

DATE 8/8/14

SUPERVISOR _____