



COMPLIANCE TEST REPORT

for

RELATIVE ACCURACY TEST AUDIT (RATA)

CONTINUOUS EMISSIONS MONITORING SYSTEM (CEMS)

CTG Turbine Units 12-1, 12-2, 13-1

**Belle River Power Plant CTGs
East China Township, Michigan**

August 2023

Prepared By
Environmental Management & Safety
Environmental Field Services Group
DTE Corporate Services, LLC
7940 Livernois Ave. G-4S
Detroit, MI 48210

CONTENTS

<u>Section</u>	<u>Page</u>
1.0 INTRODUCTION	1
2.0 SOURCE DESCRIPTION	1
UNIT 2	
3.0 SAMPLING AND ANALYTICAL PROCEDURES.....	2
3.1 OXYGEN, OXIDES OF NITROGEN AND CARBON MONOXIDE (USEPA METHODS 3A, 7E AND 10)	3
3.1.1 Sampling Method.....	3
3.1.2 O ₂ , NO _x and CO Sampling Train	4
3.1.3 Sampling Train Calibration.....	4
3.1.4 Sampling Duration & Frequency.....	4
3.1.5 Quality Control and Assurance (O ₂ , NO _x and CO).....	4
3.1.6 Data Reduction	5
4.0 OPERATING PARAMETERS.....	5
5.0 RESULTS	5
6.0 CERTIFICATION STATEMENT	7

RESULTS TABLES

Table No. 1	BRPP Unit 12-1 O ₂ , NO _x , and CO CEMS RATA Results
Table No. 2	BRPP Unit 12-2 O ₂ , NO _x , and CO CEMS RATA Results
Table No. 3	BRPP Unit 13-1 O ₂ , NO _x , and CO CEMS RATA Results

FIGURES

- 1 Units 12-1, 12-2, and 13-1 Stack Drawing & Exhaust Sampling Point Location
- 2 USEPA Method 3A, 7E and 10 Sampling Train

APPENDICES

- A Units 12-1, 12-2, and 13-1 RM Test Data
- B Units 12-1, 12-2, and 13-1 CEMS Test Data
- C EPA Protocol Gas Certification Sheets
- D Example Calculations

EXECUTIVE SUMMARY

DTE Energy's Environmental Management and Safety Environmental Field Services Group (DTE) conducted a Relative Accuracy Test Audit (RATA) at the Belle River Power Plant (BRPP) CTGs, located in China Township, Michigan. The fieldwork, performed on August 8-10, 2023, was conducted to satisfy requirements of the Michigan Renewable Operating Permit (ROP) No. MI-ROP-B2796-2015c.

The results of the RATA testing are highlighted below:

O₂, NO_x and CO RATA Results Turbine Units 12-1, 12-2, 13-1 Belle River Power Plant August 8-10, 2023

Parameter	Unit	Date	CEMS	RM	Relative Accuracy	Limit
CO (ppm)	12-1	8-10	0.0	0.4	0.5	5 ⁽¹⁾
NO _x (lb/MMBtu)	12-1	8-10	0.026	0.028	0.002*	0.015 ⁽²⁾
O ₂ (%)	12-1	8-10	14.9	15.0	0.7	1.0 ⁽³⁾
CO (ppm)	12-2	8-9	0.1	0.4	0.3	5 ⁽¹⁾
NO _x (lb/MMBtu)	12-2	8-9	0.025	0.028	0.002**	0.015 ⁽²⁾
O ₂ (%)	12-2	8-9	15.0	15.0	0.6	1.0 ⁽³⁾
CO (ppm)	13-1	8-8	6.3	7.3	1.1	5 ⁽¹⁾
NO _x (lb/MMBtu)	13-1	8-8	0.026	0.029	0.003***	0.015 ⁽²⁾
O ₂ (%)	13-1	8-8	14.9	15.0	1.0	1.0 ⁽³⁾

(1) Part 60 (alt. criteria of abs mean diff + confidence coefficient) Allowable Limit

(2) Part 75 (alt. criteria of abs mean diff. between RM and CEMS of 0.015 lb/MMBtu for units emitting <0.200 lb/MMBtu)

* A Bias Adjustment Factor (BAF) of 1.081 must be applied to DAHS per Part 75 criteria

** A Bias Adjustment Factor (BAF) of 1.097 must be applied to DAHS per Part 75 criteria

*** A Bias Adjustment Factor (BAF) of 1.111 must be applied to DAHS per Part 75 criteria

⁽³⁾ Part 75 Allowable Limit



1.0 INTRODUCTION

DTE Energy's Environmental Management and Safety Environmental Field Services Group (DTE) conducted a Relative Accuracy Test Audit (RATA) at the Belle River Power Plant (BRPP) CTGs, located in China Township, Michigan. The fieldwork, performed on August 8-10, 2023, was conducted to satisfy requirements of the Michigan Permit No. MI-ROP-B2796-2015c.

Testing was performed pursuant to Title 40, *Code of Federal Regulations*, Part 60, Appendix A (40 CFR §60 App. A), Methods 3A, 7E, 10, 19, Part 75 Appendices A & B, and Part 60 Appendix B Performance Specifications 2, 3 and 4A.

The following DTE personnel participated in the testing program: Mark D. Westerberg, Senior Specialist - Environmental, Ken St. Amant and Fred Meinecke, Environmental Specialists. Mr. Westerberg was the project leader. Mr. Dennis Farver and Jeffery Fauser, Combustion Turbine Specialists at Belle River Power Plant (ANNEX), provided process coordination for the testing program. Ms. Regina Angellotti with the Michigan Department of Environment, Great Lakes, and Energy Air Quality Division (EGLE-AQD) was present to observe a portion of the testing.

2.0 SOURCE DESCRIPTION

The Belle River Power Plant is a DTE Energy facility located at 4505 King Road in China Township, Michigan. The plant has three (3) simple cycle stationary combustion turbines, referred to as Units 12-1, 12-2, and 13-1 operating as Peaker units.

Each combustion turbine includes a compressor, combustor, turbine, and electric generator with a nominally rated load capacity of 85 megawatts (MW) at perfect conditions in simple cycle operation.

NO_x emissions are controlled by dry low NO_x technology and good combustion practices. CO emissions are controlled by good combustion practices and SO₂ emissions are controlled by utilizing low sulfur natural gas.



The RATA testing was performed while each Unit operated at full load conditions.

The exhaust stacks for Units 12-1, 12-2 and 13-1 are rectangular ducts approximately 60 feet tall with an internal equivalent diameter of approximately 12 feet. See Figure 1 for a diagram of Units 12-1, 12-2, and 13-1 sampling locations and stack dimensions.

BR Peakers utilizes Thermo-Fisher Scientific Continuous Emissions Monitoring Systems (CEMS) to record emissions during unit operations. The following Units were audited:

Unit	Analyzer	Manufacturer / Model	Serial Number
EU-CTG12-1-BP	NO _x	Thermo-Fisher Sci 42IQ/LS	1190952419
EU-CTG12-1-BP	O ₂ /CO	Thermo-Fisher Sci 48IQ	1190952423
EU-CTG12-2-BP	NO _x	Thermo-Fisher Sci 42IQ/LS	1190952420
EU-CTG12-2-BP	O ₂ /CO	Thermo-Fisher Sci 48IQ	1190952421
EU-CTG13-1-BP	NO _x	Thermo-Fisher Sci 42IQ/LS	1190952418
EU-CTG13-1-BP	O ₂ /CO	Thermo-Fisher Sci 48IQ	1190952422

3.0 SAMPLING AND ANALYTICAL PROCEDURES

Emissions measurements were obtained in accordance with procedures specified in the USEPA *Standards of Performance for New Stationary Sources*. The sampling and analytical methods used in the testing program are indicated in the table below

Sampling Method	Parameter	Analysis
USEPA Method 3A	Oxygen	Instrumental Analyzer Method
USEPA Method 7E	Oxides of Nitrogen	Chemiluminescent Analyzer
USEPA Method 10	Carbon Monoxide	NDIR Instrumental Analyzer Method

3.1 OXYGEN, OXIDES OF NITROGEN AND CARBON MONOXIDE (USEPA METHODS 3A, 7E AND 10)

3.1.1 Sampling Method

Oxygen (O₂) emissions were evaluated according to Performance Specification (PS) 3 "Specifications and Test Procedures for O₂ and CO₂ Continuous Emission Monitoring Systems in Stationary Sources" utilizing USEPA Method 3A, "Gas Analysis for Carbon Dioxide, Oxygen, Excess Air, and Dry Molecular Weight (Instrumental Analyzer Method)". The O₂ analyzer utilizes a paramagnetic sensor.

Oxides of Nitrogen (NO_x) emissions were evaluated according to Performance Specification (PS) 2 "Specifications and Test Procedures for SO₂ and NO_x Continuous Emission Monitoring Systems in Stationary Sources" utilizing USEPA Method 7E, "Determination of Nitrogen Oxides Emissions from Stationary Sources (Instrumental Analyzer Procedure)". The NO_x analyzer utilizes a Chemiluminescent detector.

Carbon monoxide (CO) emissions were evaluated following the Performance Specification (PS) 4 and 4A "Specifications and Test Procedures for Carbon Monoxide Continuous Emissions Monitoring Systems in Stationary Sources" utilizing USEPA Method 10, "Determination of Carbon Monoxide Emissions from Stationary Sources". The CO analyzer utilizes a NDIR detector.

3.1.2 O₂, NO_x and CO Sampling Train

The EPA Methods 3A, 7E and 10 sampling system (Figure 2) consisted of the following components:

- (1) Heated stainless steel sampling probe with heated filter.
- (2) Heated Teflon™ sampling line.
- (3) Universal® gas conditioner with particulate filter.
- (4) Flexible unheated Teflon™ sampling line.
- (5) Servomex 1400 O₂/CO₂ gas analyzer TECO 48i Chemiluminescent NO_x gas analyzer and TECO 48C NDIR CO gas analyzer.
- (6) USEPA Protocol 1 calibration gases.
- (7) Data Acquisition System

3.1.3 Sampling Train Calibration

The O₂/NO_x/CO sampling trains were calibrated following the procedures outlined in USEPA Methods 3A, 7E and 10. Zero, span, and mid-range calibration gases were introduced directly into the O₂, NO_x and CO analyzers to determine the instruments linearity. A zero and mid-range span gas was then introduced through the entire sampling system to determine sampling system bias for each analyzer. Additional system calibrations were performed at the completion of each test.

3.1.4 Sampling Duration & Frequency

The RATA testing of the Units 12-1, 12-2, and 13-1 O₂, NO_x and CO CEMS consisted of between 9 to 12, 21-minute samples at the test platform level of each unit's exhaust stack. Sampling was conducted at three points along a single path across the duct. Sampling was performed simultaneously for O₂, NO_x and CO. Data was recorded as 1-minute averages. The results are included in Appendix A.

3.1.5 Quality Control and Assurance (O₂, NO_x and CO)

All sampling and analytical equipment were calibrated following the guidelines referenced in Methods 3A, 7E and 10. Calibration gases were EPA Protocol 1 gases. The analyzer spans for Units 12-1, 12-2, and 13-1 RATA testing were 0-17.51% (17.51, 11.23, and zero) for O₂, 0-17.85 ppm (17.85, 7.943, and zero) for NO_x, and 0-8.984 ppm (8.984, 5.125, (26.17, 13.83 for Unit 13-1) and zero) for CO. The 11.23% O₂ gas was used to zero the NO_x and



CO analyzers and the 7.943 ppm NO_x gas was used to zero the O₂ analyzer.

Calibration gas certification sheets are included in Appendix C.

3.1.6 Data Reduction

The NO_x and CO emission readings in parts per million, dry (ppm_{dry}) and O₂ emission readings in percent (%) were recorded at 4-second intervals and averaged to 1-minute increments. The O₂, NO_x and CO emissions were drift corrected utilizing pre and post-run calibration data. The O₂ data was used to convert the NO_x ppm data to pounds per million British thermal units (lb/MMBtu).

The RM data collected for the Units 12-1, 12-2, and 13-1 testing can be found in Appendix A.

Corresponding CEMS data collected during the Units 12-1, 12-2, and 13-1 testing can be found in Appendix B.

RA calculations are based upon calculations found in USEPA Methods 3A, 7E, 10, 19 and PS2, 3, 4 and 4A. Example calculations can be found in Appendix D.

4.0 OPERATING PARAMETERS

Each Unit was tested at full load conditions which were determined by plant personnel. Load in terms of megawatts (MW) are included with the CEMS data located in Appendix B.

5.0 RESULTS

Tables 1 through 3 present the RATA testing results from Units 12-1, 12-2, and 13-1, respectively. The O₂, NO_x and CO monitors passed the RATA following the specifications of 40CFR60 – Performance Specification 2, 3, 4 and 4A and 40CFR75. The O₂ relative accuracy, calculated as %, met the criteria of <1.0% mean difference for all 3 units. The CO relative accuracy, calculated as ppm met the criteria of <5 ppm mean difference for all 3 units. The NO_x relative accuracy, calculated as pounds per million British Thermal units (lb/MMBtu), met the alternate criteria of <0.015 lb/MMBtu mean difference between RM and CEMS for all 3 units. In addition, unit (EU-CTG12-1-BP) had a bias adjustment factor (BAF) =

DTE

1.081, unit (EU-CTG12-2-BP) had a BAF = 1.097, and unit (EU-CTG13-1-BP) has a BAF = 1.111 per 40CFR75 criteria.



6.0 CERTIFICATION STATEMENT

"I certify that I believe the information provided in this document is true, accurate, and complete. Results of testing are based on the good faith application of sound professional judgment, using techniques, factors, or standards approved by the Local, State, or Federal Governing body, or generally accepted in the trade."

Mark D. Westerberg

Mr. Mark D. Westerberg, QSTI

This report prepared by: *Mark D. Westerberg*

Mr. Mark D. Westerberg, QSTI
Senior Specialist, Field Services Group
Environmental Management and Safety
DTE Energy Corporate Services, LLC

This report reviewed by: _____

Mr. Mark R. Grigereit, QSTI
Principal Engineer, Field Services Group
Environmental Management and Safety
DTE Energy Corporate Services, LLC

DTE

RESULTS TABLES

DTE

FIGURES



Table 1
EU-CTG12-1-BP CO, NO_x and O₂ CEMS RATA Results
Belle River Peakers
August 10, 2023

Test No.	Test Times (DAHS)	CO			O ₂			NO _x		
		RM (ppm)	CEM (ppm)	Difference (ppm)	RM (% O ₂)	CEM (% O ₂)	Difference (ppm)	RM (lb/MMBtu)	CEM (lb/MMBtu)	Difference (lb/MMBtu)
1	6:57-7:18	0.5	0.1	0.4	14.9	14.9	0.0	0.029	0.027	0.002
2	7:30-7:51	0.6	0.1	0.5	14.9	14.9	0.0	0.029	0.027	0.002
3	8:01-8:22	0.4	0.0	0.4	15.0	14.9	0.1	0.028	0.026	0.002
4	8:36-8:57	0.2	0.0	0.2	14.9	14.9	0.0	0.028	0.026	0.002
5	9:09-9:30	0.2	0.0	0.2	15.0	14.9	0.1	0.028	0.026	0.002
6	10:01-10:22	0.5	0.0	0.5	15.0	14.9	0.1	0.028	0.026	0.002
7	10:36-10:57	0.5	0.0	0.5	15.0	14.9	0.1	0.028	0.025	0.003
8	11:10-11:31	0.4	0.0	0.4	15.0	14.9	0.1	0.029	0.026	0.003
9	11:42-12:03	0.5	0.0	0.5	15.0	14.9	0.1	0.029	0.026	0.003
10	12:13-12:34	0.5	0.0	0.5	15.0	14.9	0.1	0.028	0.026	0.002
11	12:45-13:06	0.5	0.0	0.5	15.0	14.9	0.1	0.028	0.026	0.002
Avg:		0.4	0.0	0.4	15.0	14.9	0.1	0.028	0.026	0.002
		Standard Deviation:		0.1	Standard Deviation:		0.05	Standard Deviation:		0.000
		Confidence Coefficient (CC):		0.1	Confidence Coefficient (CC):		0.04	Confidence Coefficient (CC):		0.000
		¹ RELATIVE ACCURACY:		0.5	RELATIVE ACCURACY:		0.7	² RELATIVE ACCURACY:		9.0

Test not used in Calculation

¹ using PS4A alternate criteria of the absolute difference between the RM and CEMs plus the confidence coefficient (CC).

² passes on low emitter criteria - mean difference of + or - 0.015 lb/MMBtu for units emitting <0.200 lb/MMBtu



Table 2
EU-CTG12-2-BP CO, NO_x and O₂ CEMS RATA Results
Belle River Peakers
August 9, 2023

Test No.	Test Times (DAHS)	CO			O ₂			NO _x		
		RM (ppm)	CEM (ppm)	Difference (ppm)	RM (% O ₂)	CEM (% O ₂)	Difference (ppm)	RM (lb/MMBtu)	CEM (lb/MMBtu)	Difference (lb/MMBtu)
1	6:55-7:16	1.3	0.1	1.2	15.0	15.0	0.0	0.028	0.026	0.002
2	7:27-7:48	0.4	0.1	0.3	15.0	15.0	0.0	0.028	0.025	0.003
3	7:59-8:20	0.5	0.1	0.4	15.0	15.0	0.0	0.028	0.025	0.003
4	8:29-8:50	0.5	0.1	0.4	15.0	15.0	0.0	0.028	0.025	0.003
5	8:59-9:20	0.3	0.1	0.2	15.0	15.0	0.0	0.028	0.025	0.003
6	9:35-9:56	0.4	0.1	0.3	15.1	15.0	0.1	0.028	0.025	0.003
7	10:09-10:30	0.4	0.1	0.3	15.1	15.0	0.1	0.027	0.025	0.002
8	10:39-11:00	0.3	0.0	0.3	15.1	15.0	0.1	0.027	0.025	0.002
9	11:10-11:31	0.3	0.0	0.3	15.1	15.0	0.1	0.027	0.025	0.002
10	11:43-12:04	0.3	0.0	0.3	15.1	15.0	0.1	0.027	0.025	0.002
Avg:		0.4	0.1	0.3	15.0	15.0	0.0	0.028	0.025	0.002
		Standard Deviation:		0.05	Standard Deviation:		0.05	Standard Deviation:		0.001
		Confidence Coefficient (CC):		0.04	Confidence Coefficient (CC):		0.04	Confidence Coefficient (CC):		0.000
		¹ RELATIVE ACCURACY:		0.3	RELATIVE ACCURACY:		0.6	² RELATIVE ACCURACY:		10.3

Test not used in Calculation

¹ using PS4A alternate criteria of the absolute difference between the RM and CEMs plus the confidence coefficient (CC).

² passes on low emitter criteria - mean difference of + or - 0.015 lb/MMBtu for units emitting <0.200 lb/MMBtu



Table 3
EU-CTG13-1-BP CO, NO_x and O₂ CEMS RATA Results
Belle River Peakers
August 8, 2023

Test No.	Test Times (DAHS)	CO			O ₂			NO _x		
		RM (ppm)	CEM (ppm)	Difference (ppm)	RM (% O ₂)	CEM (% O ₂)	Difference (ppm)	RM (lb/MMBtu)	CEM (lb/MMBtu)	Difference (lb/MMBtu)
1	8:04-8:25	8.8	7.6	1.2	14.9	14.9	0.0	0.029	0.026	0.003
2	8:38-8:59	8.1	7.1	1.0	15.0	14.9	0.1	0.029	0.026	0.003
3	9:08-9:29	7.6	6.6	1.0	15.0	14.9	0.1	0.030	0.026	0.004
4	9:39-10:00	7.6	6.6	1.0	15.0	14.9	0.1	0.030	0.026	0.004
5	10:10-10:31	7.8	6.6	1.2	15.0	15.0	0.0	0.029	0.025	0.004
6	10:41-11:02	7.5	6.4	1.1	15.0	14.9	0.1	0.029	0.026	0.003
7	11:15-11:36	7.3	6.4	0.9	15.1	14.9	0.2	0.030	0.026	0.004
8	11:47-12:08	7.2	6.2	1.0	15.1	14.9	0.2	0.029	0.026	0.003
9	12:17-12:38	6.7	5.7	1.0	15.0	14.9	0.1	0.029	0.026	0.003
10	12:53-13:14	<u>6.2</u>	5.2	<u>1.0</u>	<u>15.0</u>	<u>14.9</u>	<u>0.1</u>	<u>0.029</u>	<u>0.026</u>	<u>0.003</u>
Avg:		7.3	6.3	1.0	15.0	14.9	0.1	0.029	0.026	0.003
			Standard Deviation:	0.10		Standard Deviation:	0.06		Standard Deviation:	0.000
			Confidence Coefficient (CC):	0.08		Confidence Coefficient (CC):	0.05		Confidence Coefficient (CC):	0.000
			¹RELATIVE ACCURACY:	1.1		RELATIVE ACCURACY:	1.0		²RELATIVE ACCURACY:	12.7

 Test not used in Calculation

¹ using PS4A alternate criteria of the absolute difference between the RM and CEMs plus the confidence coefficient (CC).

² passes on low emitter criteria - mean difference of + or - 0.015 lb/MMBtu for units emitting <0.200 lb/MMBtu

DTE

FIGURES



Figure 1 – Sampling Location
DTE Energy– BRPP CTGs
August 8-10, 2023

— NOx & CO sampling points

Point	Distance (in.)
3	18
2	54
1	90

PM sampling points

☆ Point	Distance (in.)
6	4.75
5	15.77
4	31.97
3	76.03
2	92.23
1	103.25

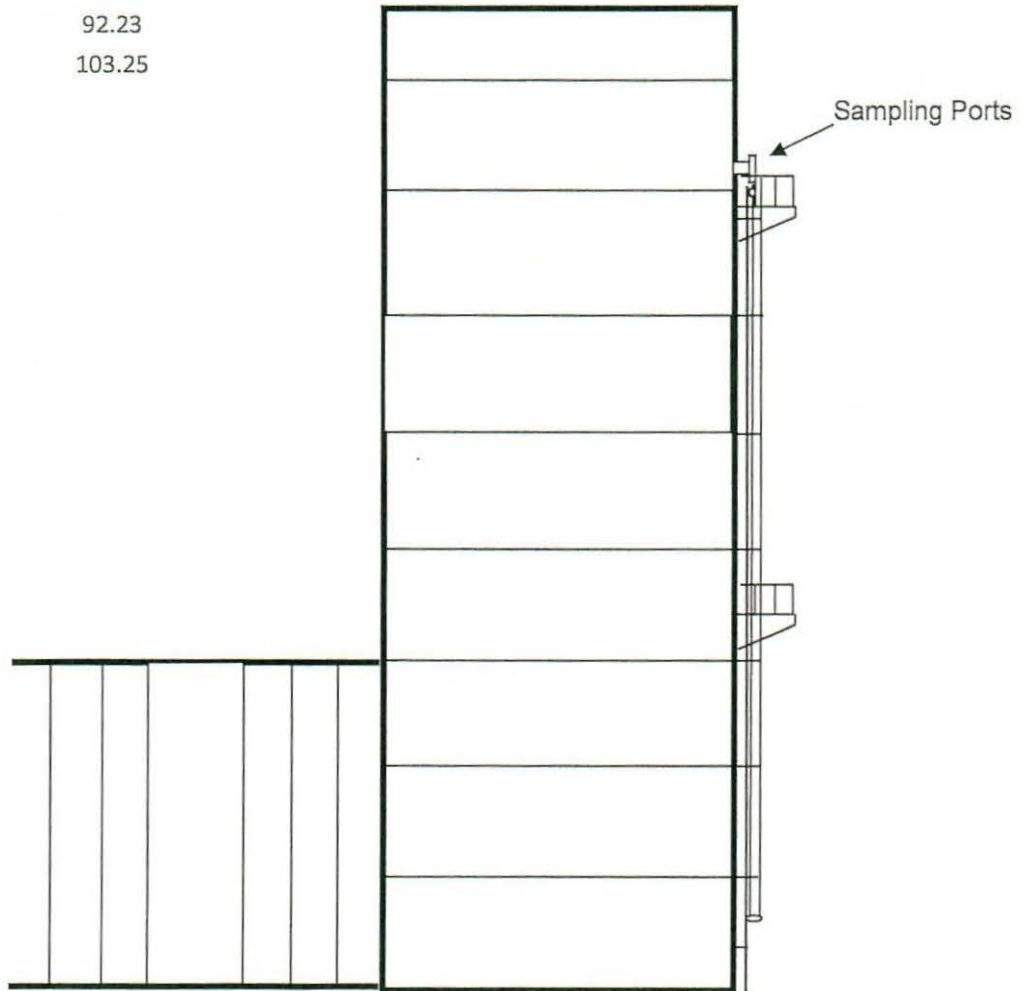
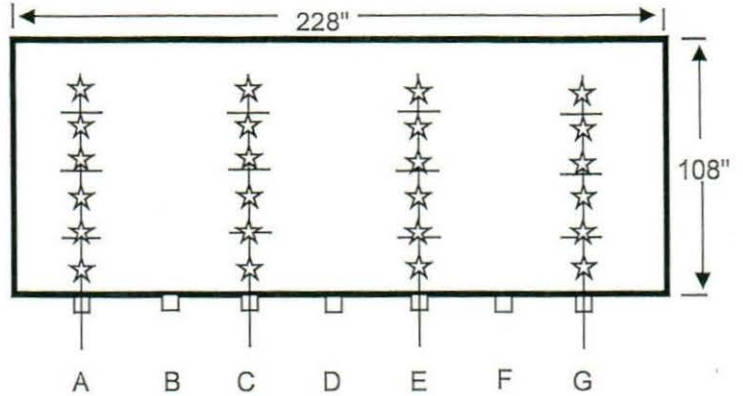


Figure 2 – EPA Methods 3A/7E/10
DTE Energy – BRPP CTGs
August 8-10, 2023

