

**DEPARTMENT OF ENVIRONMENTAL QUALITY
AIR QUALITY DIVISION
ACTIVITY REPORT: Self Initiated Inspection**

B625928809

FACILITY: NORTHERN MICHIGAN VENEERS INC		SRN / ID: B6259
LOCATION: 710 RAINS DR, GLADSTONE		DISTRICT: Upper Peninsula
CITY: GLADSTONE		COUNTY: DELTA
CONTACT: Dayna Bruntjens , Plant Manager		ACTIVITY DATE: 02/11/2015
STAFF: Joe Scanlan	COMPLIANCE STATUS: Compliance	SOURCE CLASS: MINOR
SUBJECT: Announced inspection to determine compliance with PTI#'s 234-92A and 764-77.		
RESOLVED COMPLAINTS:		

INSPECTION DATE: 2/11/2015

DEQ STAFF: Joseph Scanlan, EQA

FACILITY: Northern Michigan Veneers, Inc.

FACILITY OWNER: Northern Michigan Veneers, Inc (Besse Forest Group), 710 Rains Drive, Gladstone

FACILITY CONTACT: Dayna Bruntjens, Plant Manager, 906-428-1082, nmv@bessegroup.com

DESCRIPTION/OPERATIONS: NMV uses high quality sliced veneers to make spliced stock 4'x8' panels for use in manufacturing, mostly furniture construction. The veneer is produced elsewhere and is shipped to NMV for panel production. Approximately 9 species of trees are used and the most common veneer thickness is .020". The factory operates two shifts.

EU DETAILS/REGULATIONS:

NMV has two PTI's: #764-77 for a twin-disc veneer chipper and #234-92A for a veneer edge glue spray booth.

PTI# 764-77, EU-Chipper operates during the entire 1st shift and a couple of hours during the 2nd shift. The chipper utilizes a cyclone. The chipper is regulated for:

- Particulates not to exceed .1 lbs per 1000lbs of exhaust gases;
- Visible emissions not to exceed 20%;
- A fugitive dust plan is required to be in place.

PTI#234-92A, EU-GlueBooth, is a three-sided spray booth with a ceiling exhaust ventilation system utilizing filter media to capture overspray particulates during application of the veneer glue. EU-GlueBooth is regulated for:

- Emission limits:

Pollutant	Equipment	Limit	Time Period	Testing/Monitoring	Applicable Requirements
PM-10	EU-GlueBooth	8.0 lbs/hr	Test Protocol	GC-13	40 CFR 52.21(c) & (d)
PM-2.5	EU-GlueBooth	0.10 lbs/1000 lbs exhaust	Test Protocol	GC 13	R336.1331
Formaldehyde	EU-GlueBooth	0.61 tpy	12-mnth rolling	SC 1.7	R336.1225, R336.1702(a), R336.1901

- Process/Operational Limits:

1. Waste adhesives shall be captured and stored in closed containers and disposed of in an acceptable manner.
2. Disposal of spent filters shall be performed in a manner which minimizes introduction of air contaminants to outer air.

- Equipment:

1. EU-GlueBooth shall not operate unless filters are installed, maintained, and operated in a satisfactory manner.

- Recordkeeping/Reporting/Notification:

1. All required calculations shall be completed in an acceptable format;
2. Current listing of each adhesive and chemical composition, Safety Data Sheets are acceptable;
3. Formaldehyde mass missions calculations as specified in the PTI.

SUMMARY: Staff found all general and special conditions for both PTI's were being met and the facility is in compliance with all regulations referenced. Particulates and visible emissions were almost non-existent to the naked eye in regards to the veneer chipper and cyclone. Emissions calculations and rates provided prove NMV's material limits to be far below the permitted threshold with a 12-mnth rolling average of 0.004 lbs. Adhesive usage records and manufacturer Safety Data Sheets for all adhesives were provided. Product XB-90K5-LF is currently the only product containing formaldehyde, as many furniture manufacturer's are producing low-formaldehyde emitting products that meet the California Air Resource Board's (CARB) requirements. Extra media filters for the glue spray booth in stock and filters are being changed as needed and disposed of properly.

I observed no violations of state or federal air pollution control rules and all permit requirements are being met. Permittee is in compliance.

XB-90K5-LF	Quanta of Glue Used	Pounds Used (Monthly)	Pounds Recovered (Monthly)	Formaldehyde Content in Pounds (Monthly)	Formaldehyde Emission Rate (Monthly)	Formaldehyde Emission Rate (12 Month Rolling)
Jan-11	5	1500	1397	11.2	0.0007	0.001
Feb-11	4	1000	752	9.7	0.0004	0.001
Mar-11	2	1200	752	11.5	0.0005	0.001
Apr-11	3	750	478	6.9	0.0004	0.001
May-11	4	1200	781	11.4	0.0007	0.001
Jun-11	3	750	718	8.9	0.0005	0.001
Jul-11	3	750	1044	8.8	0.0004	0.001
Aug-11	3	1200	1235	11.2	0.0007	0.001
Sep-11	3	750	512	11.2	0.0007	0.001
Oct-11	3	750	368	6.9	0.0004	0.001
Nov-11	3	750	343	4.9	0.0002	0.001
Dec-11	4	1000	752	9.7	0.0004	0.001
Jan-12	4	1000	1397	9.7	0.0004	0.001
Feb-12	3	750	481	8.9	0.0004	0.001
Mar-12	4	1000	689	8.2	0.0004	0.001
Apr-12	4	1000	750	9.7	0.0004	0.001
May-12	4	1000	689	8.2	0.0004	0.001
Jun-12	4	1000	400	9.2	0.0004	0.001
Jul-12	5	1200	778	11.4	0.0007	0.001
Aug-12	4	1000	438	9.2	0.0004	0.001
Sep-12	4	1000	471	8.2	0.0004	0.001
Oct-12	3	750	368	6.9	0.0004	0.001
Nov-12	3	750	317	7.3	0.0003	0.001
Dec-12	3	750	372	8.9	0.0004	0.001
Jan-13	3	750	327	6.9	0.0004	0.001
Feb-13	5	1200	754	11.5	0.0007	0.001
Mar-13	4	1000	367	9.2	0.0004	0.001
Apr-13	2	500	310	4.8	0.0002	0.001
May-13	3	750	750	6.2	0.0004	0.001
Jun-13	3	750	370	8.8	0.0004	0.001
Jul-13	3	750	341	6.9	0.0004	0.001
Aug-13	3	750	368	6.9	0.0004	0.001
Sep-13	3	750	338	8.9	0.0004	0.001
Oct-13	4	1200	377	11.5	0.0007	0.001
Nov-13	3	750	588	8.9	0.0004	0.001
Dec-13	2	500	387	4.8	0.0002	0.001
Jan-14	4	1000	1084	9.2	0.0004	0.001
Feb-14	4	1000	1204	9.2	0.0004	0.001
Mar-14	3	750	734	6.0	0.0003	0.001
Apr-14	5	1200	1156	11.5	0.0007	0.001
May-14	4	1000	1142	9.2	0.0004	0.001
Jun-14	4	1000	782	8.2	0.0004	0.001
Jul-14	4	1000	376	9.2	0.0004	0.001
Aug-14	3	750	601	6.9	0.0004	0.001
Sep-14	3	750	741	6.9	0.0004	0.001
Oct-14	3	750	401	6.9	0.0004	0.001
Nov-14	3	750	708	6.9	0.0004	0.001
Dec-14	3	750	333	8.9	0.0004	0.001
Jan-15	0	0	0	0	0	0.001
Feb-15	0	0	0	0	0	0.001
Mar-15	0	0	0	0	0	0.001
Apr-15	0	0	0	0	0	0.001
May-15	0	0	0	0	0	0.001
Jun-15	0	0	0	0	0	0.001
Jul-15	0	0	0	0	0	0.001
Aug-15	0	0	0	0	0	0.001
Sep-15	0	0	0	0	0	0.001
Oct-15	0	0	0	0	0	0.001
Nov-15	0	0	0	0	0	0.001
Dec-15	0	0	0	0	0	0.001

Formaldehyde Used

Number of quanta used in system (200 = pounds used / month)

Quanta of glue used for recovered pounds during process

Number of pounds used (monthly) (200 = pounds used / month)

Formaldehyde Content in pounds (monthly)

Formaldehyde Emission Rate (Monthly)

Formaldehyde Emission Rate (12 Month Rolling)

Image 1(NMV1) : Log for PTI# 234-92A, EU-GlueBooth, showing pounds of XB-90K5-LF used, reclaimed, monthly lb for lb formaldehyde content, and monthly and 12-month rolling mass emission calcs.

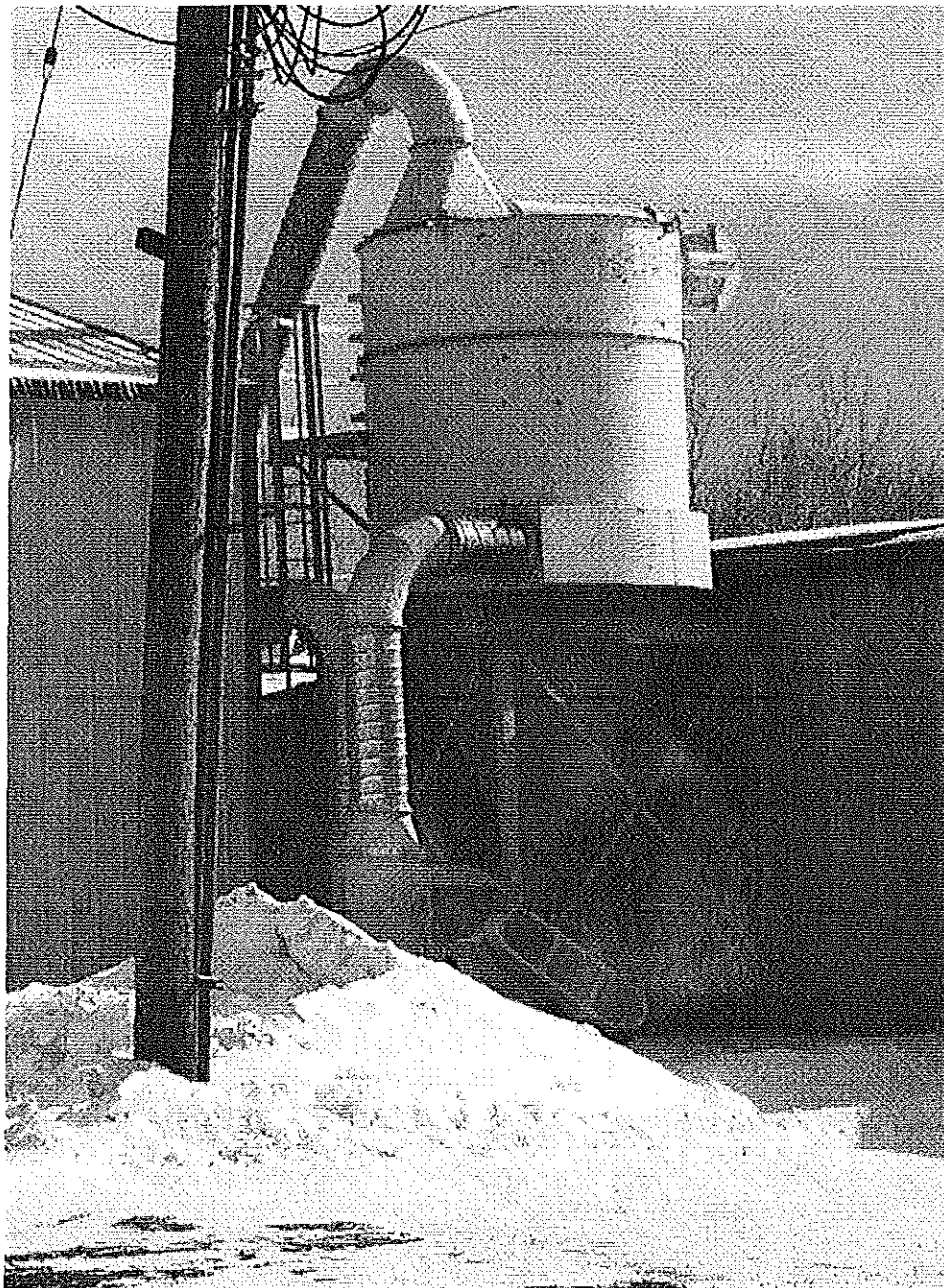


Image 2(NMV2) : Cyclone for veneer chipper PTI#764-77

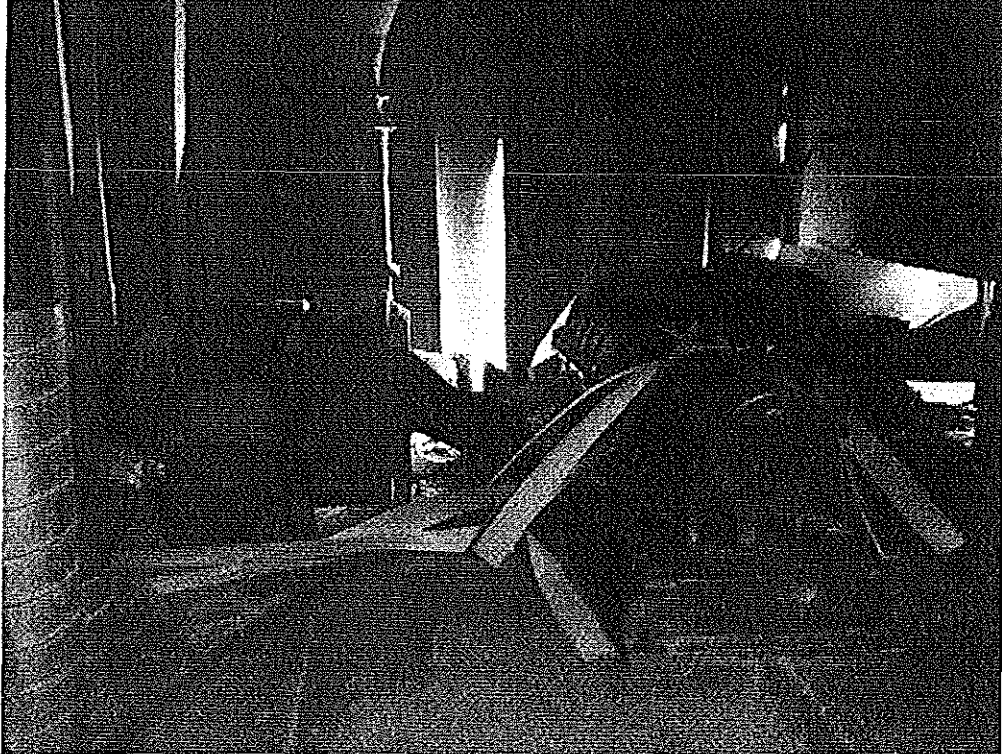


Image 3(NMV3) : Jackson twin disc veneer chipper PTI#764-77

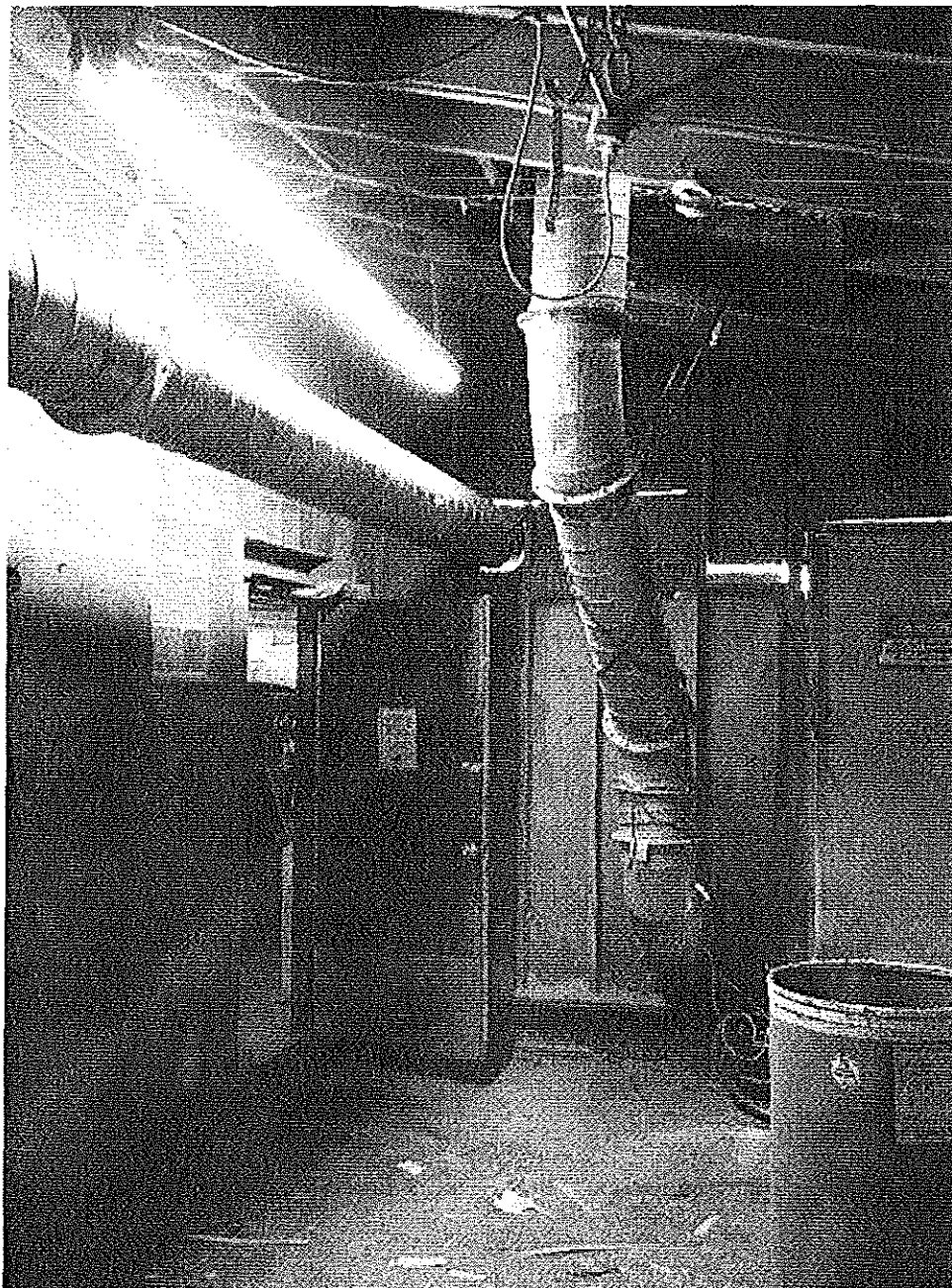


Image 4(NMV4) : Ducting from chipper to cyclone for PTI# 764-77

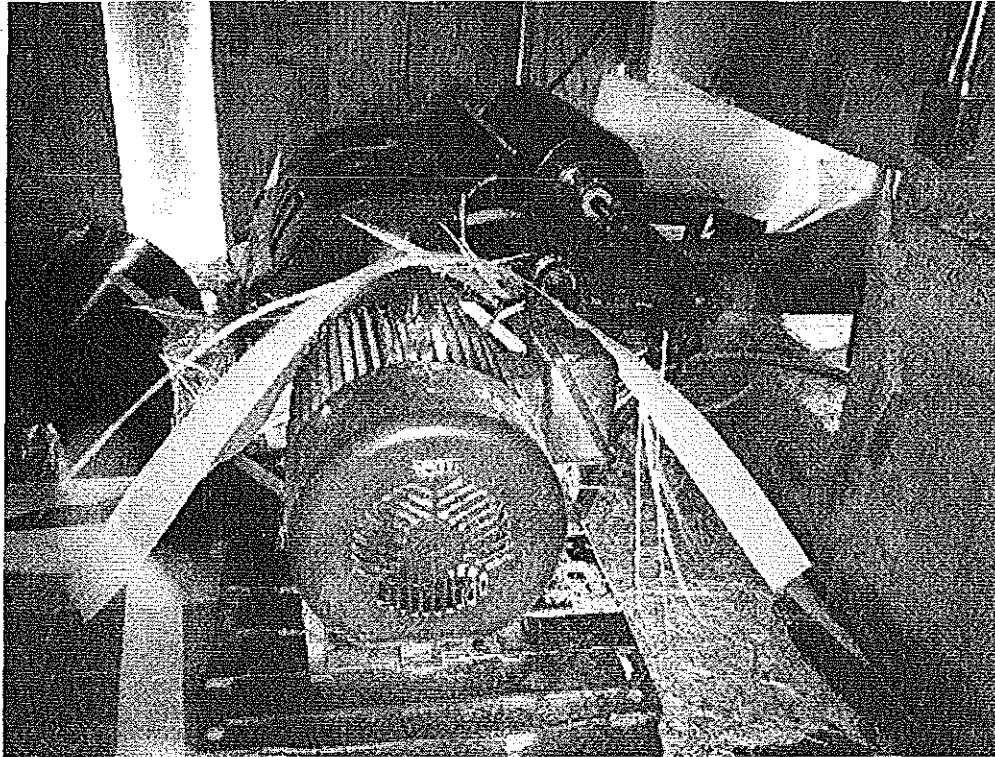


Image 5(NMV5) : Closeup of veneer chipper PTI# 764-77

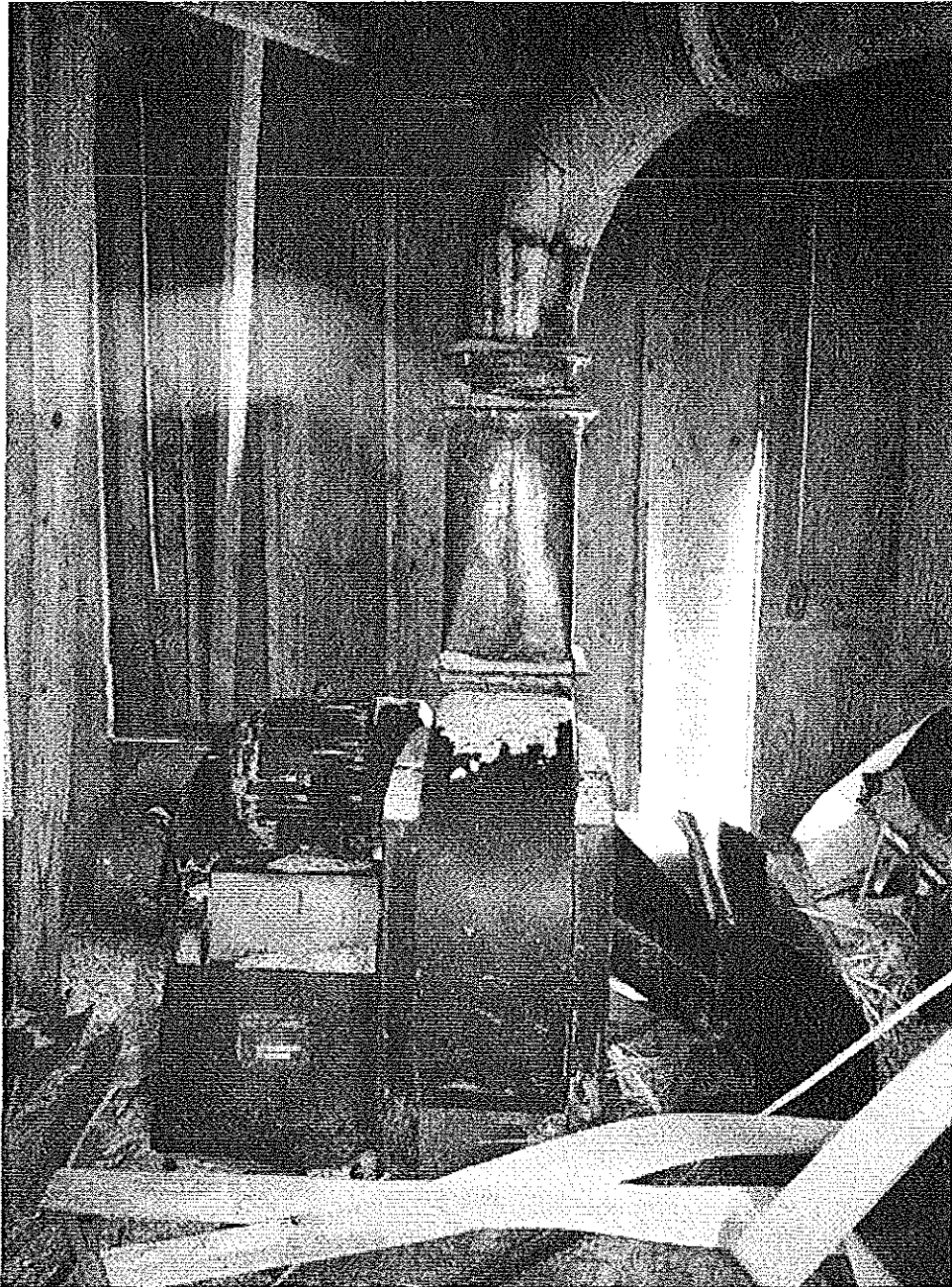


Image 6(NMV6) : Veneer chipper w/ductwork to cyclone PTI# 764-77



Image 7(NMV7) : Production area



Image 8(NMV8) : New replacement filters for veneer spray booth PTI# 234-92A, EU-GlueBooth

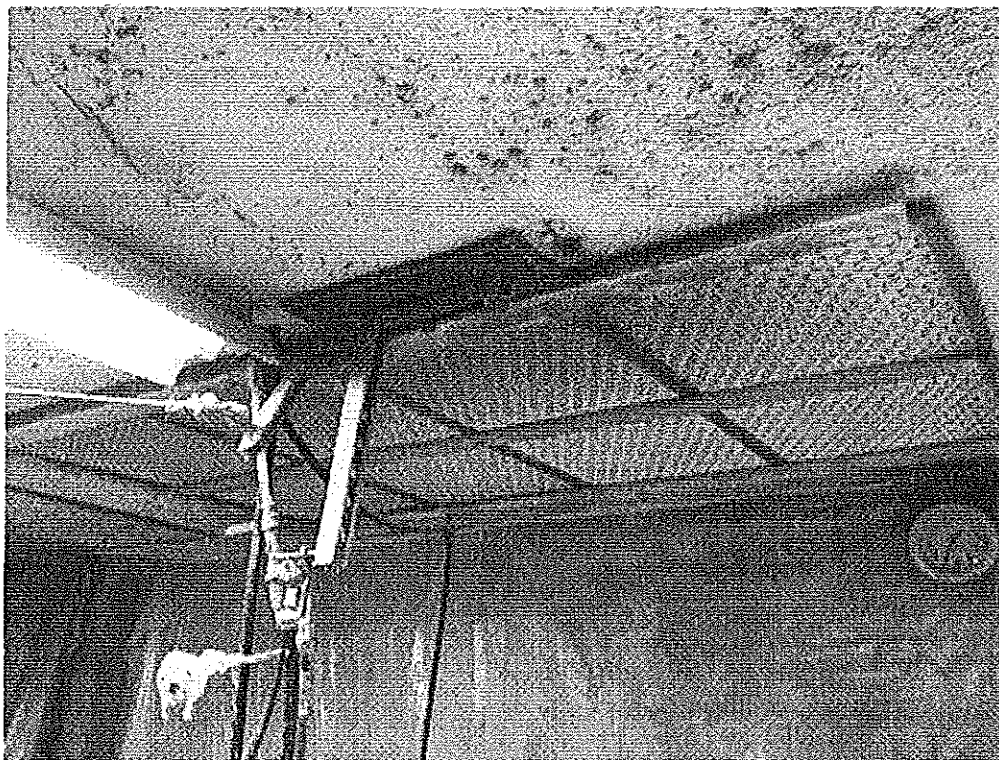


Image 9(NMV9) : Ceiling exhaust filter installed in EU-GlueBooth, PTI#234-92A

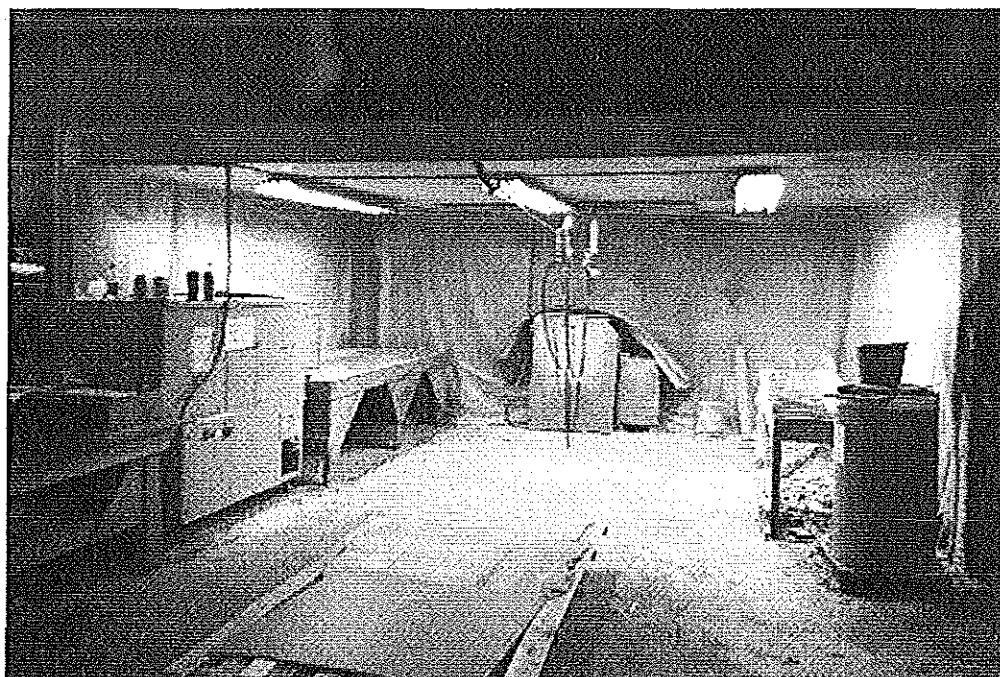


Image 10(NMV10) : EU-GlueBooth, PTI# 234-92A. Exhaust filters in ceiling.



Image 11(NMV11) : Finished product in 4'x8' sheets waiting for shipment.

NAME Josey [Signature]

DATE 6/8/2015

SUPERVISOR _____