

DEPARTMENT OF ENVIRONMENTAL QUALITY
AIR QUALITY DIVISION
ACTIVITY REPORT: Self Initiated Inspection

B645126629

FACILITY: BACCO CONSTRUCTION CO PLANT 12		SRN / ID: B6451
LOCATION: ASPHALT PLANT 12 PERMIT #547-78BG, IRON MOUNTAIN		DISTRICT: Upper Peninsula
CITY: IRON MOUNTAIN		COUNTY: DICKINSON
CONTACT: Dan O'Neil , Operator		ACTIVITY DATE: 08/15/2014
STAFF: Joe Scanlan	COMPLIANCE STATUS: Compliance	SOURCE CLASS: SM 208A
SUBJECT: Unannounced inspection to ensure compliance with PTI #547-78BG.		
RESOLVED COMPLAINTS:		

Facility: Baaco Asphalt Plant #12

Inspection Date: 8/15/2014

DEQ-AQD Staff: Joseph Scanlan

Compliance Status: In compliance

On 8/15/2014 I conducted an unannounced inspection of this portable asphalt plant. The plant was located at the 480 West Pit in Sands Township owned and operated by A. Lindberg & Sons. My contact was the plant foreman, Dan O'Neil.

A copy of PTI #547-78BG was posted on a cork board upon entering the mobile operators cabin. Mr. O'Neil stated they had arrived on site 8/4 and would be finished with crushing operations by 8/29/2014. There were 3 employees total on site, including himself. Mr. O'Neil inspects the baghouse utilizing a tracer compound and a blacklight each time he arrives at a new site. The baghouse was inspected on 8/7 and 3 bags and seals were changed at that time.

At the time of inspection, the plant was operating at 150 tons/hr with a 23% RAP mixture. Stack outlet temperature was 225°F. Photohelic gauge on baghouse was reading 4.5" H₂O. Waste oil logs and spec sheets were on site. To date this year, he and his crew had produced a total of 41,858 total mix tons, with 8030 tons of that being recycle. He expects at this site they will produce a total of 18k tons.

I observed no violations of the Air Pollution Control Rules or PTI #547-78BG during my inspection.



Image 1(8/20/2014) : Storage silo and plant spread

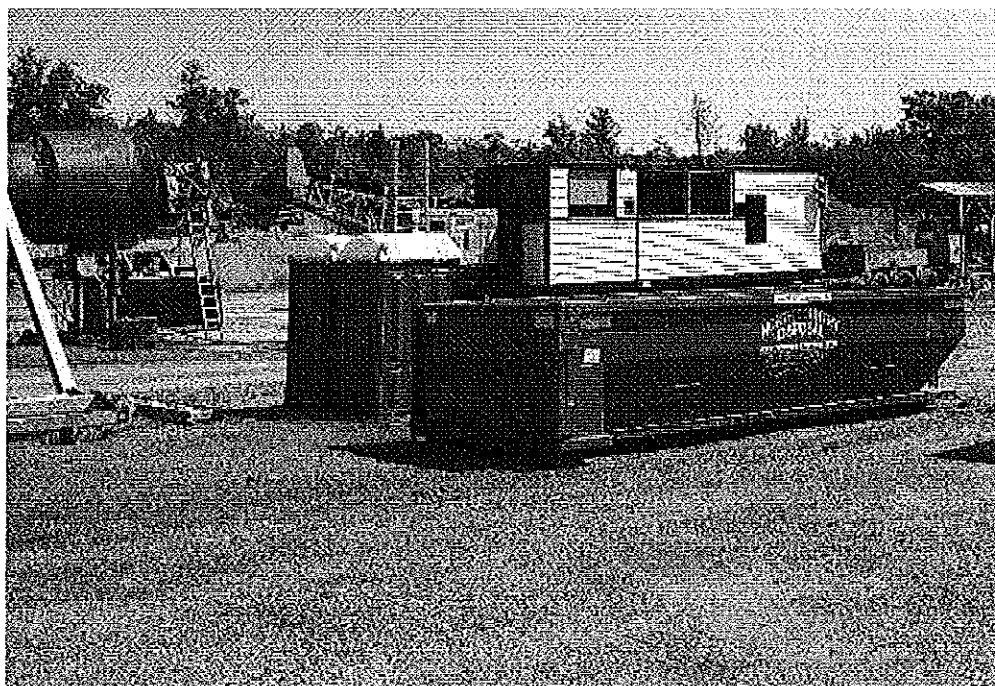


Image 2(8/20/2014) : Operator cabin

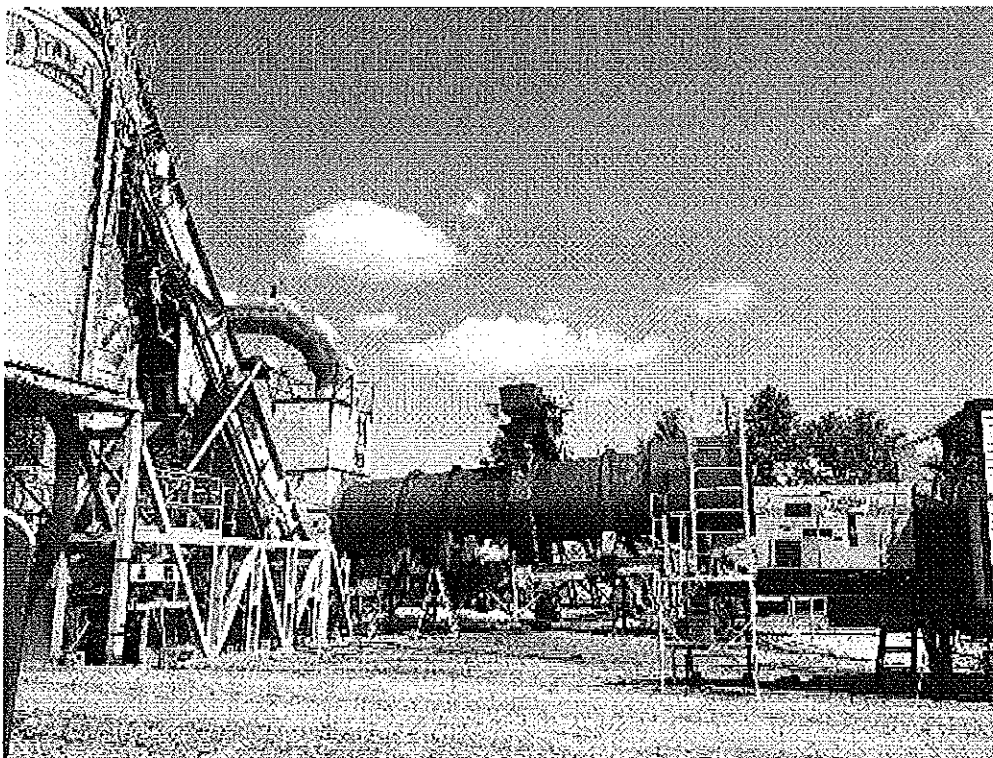


Image 3(8/20/2014) : Plant in operation

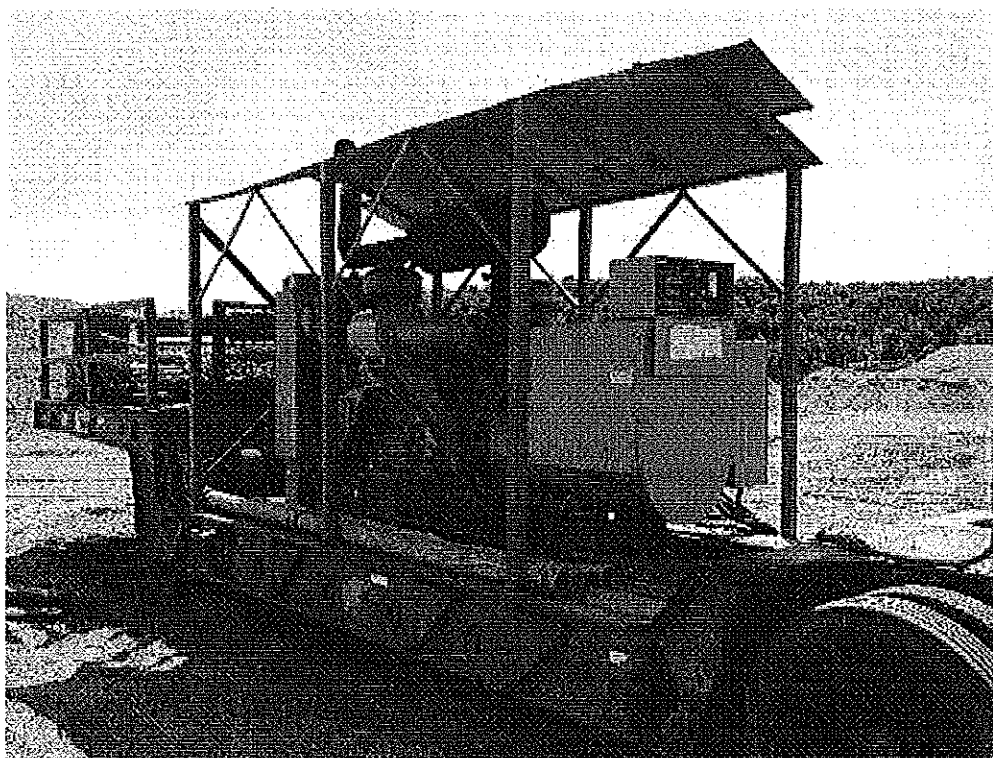


Image 4(8/20/2014) : On-site generator

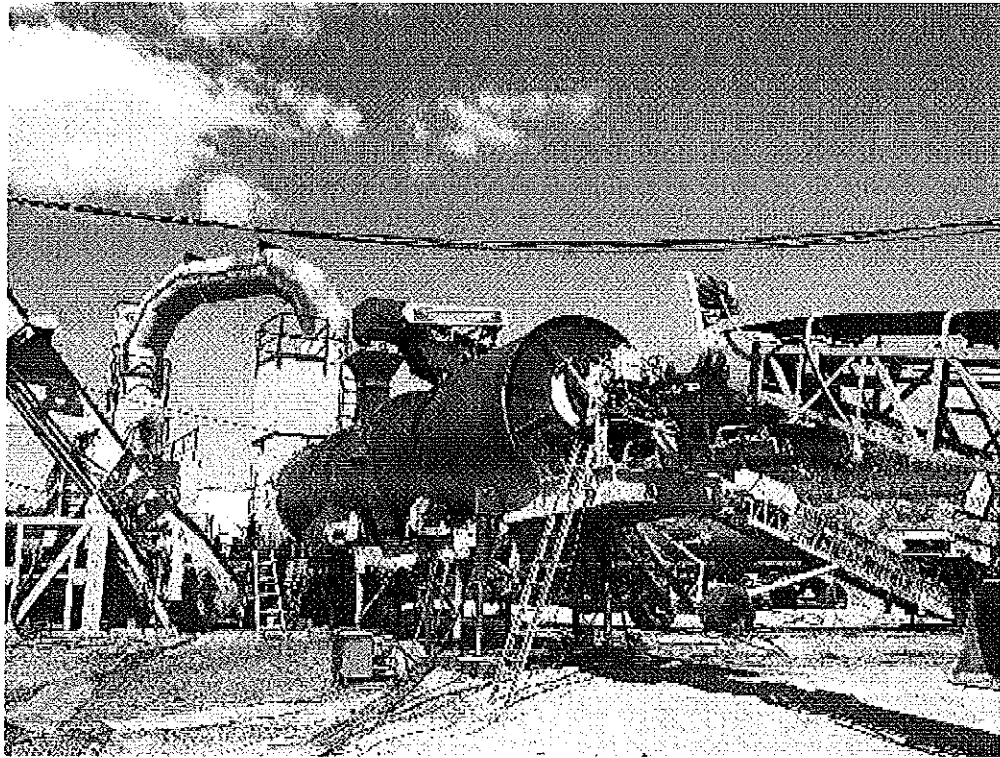


Image 5(8/20/2014) : Plant in operation

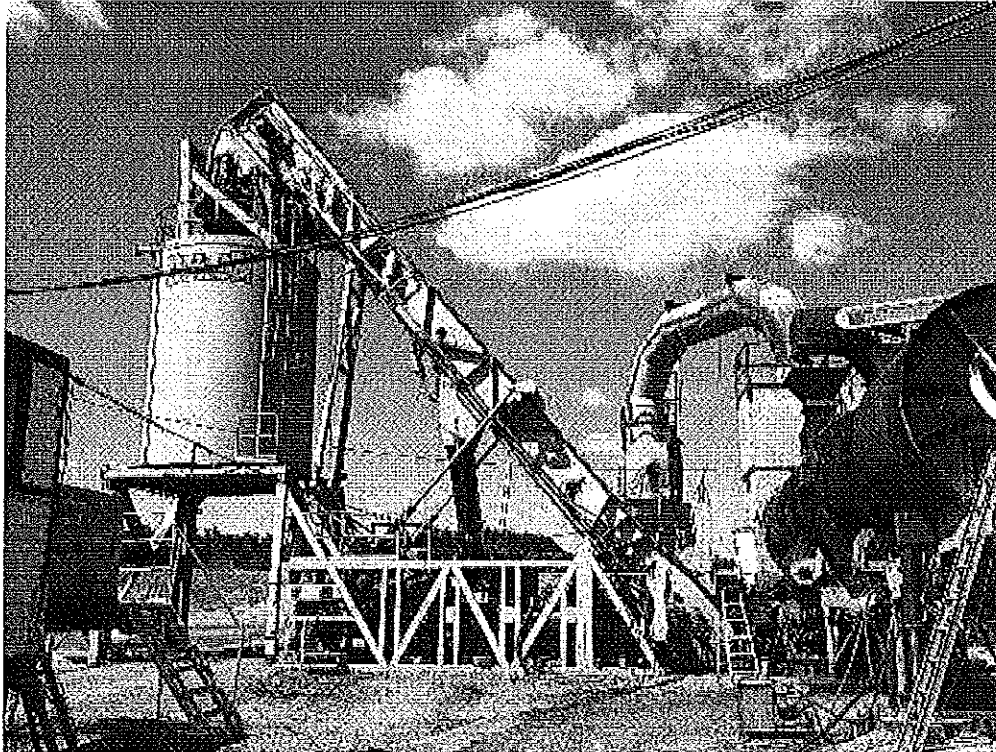
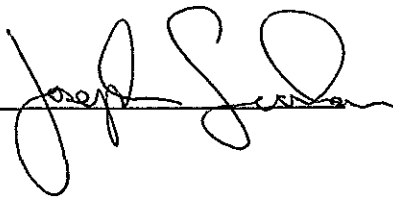


Image 6(8/20/2014) : Plant in operation

NAME 

DATE 8/27/14

SUPERVISOR _____