



Arbor Hills Landfill
Weekly Community Locations Scentometer Readings
December 10-December 16, 2018

Locations	12-10 Mon		12-11 Tue		12-12 Wed		12-13 Thu		12-14 Fri		12-15 Sat		12-16 Sun		Average			
	a.m.	p.m.	a.m.	p.m.	a.m.	p.m.	a.m.	p.m.	a.m.	p.m.	a.m.	p.m.	a.m.	p.m.	a.m.	p.m.	All	
Wind Direction	NW	S/SSW	SW	NW	SE	SE/SSE	W/WSW	SSE	ESE	NW	NNE/NE	NE	N/NW	W/SSW				
Downwind Scentometer Readings																		
Mulberry Ct. & Mulberry Way	C-1	0	0	0	< 2	-	-	0	-	-	0	-	-	0	0	0.0	0.5	0.3
Boulder & Parkside Dr.	C-2	0	0	0	0	-	-	0	-	-	0	-	-	0	< 2	0.0	0.5	0.3
Entrance to Steeplechase	C-3	0	0	0	0	-	-	< 2	-	-	0	-	-	0	0	0.5	0.0	0.3
Ridgewood Elementary School	C-4	0	0	0	0	-	-	0	-	-	0	-	-	0	0	0.0	0.0	0.0
Waterway Pk on Ridgeway Dr.	C-5	-	0	0	-	-	-	0	-	-	-	-	-	0	0	0.0	0.0	0.0
Bayberry Way & Rose Terrace	C-6	-	0	0	-	-	-	0	-	-	-	-	-	0	0	0.0	0.0	0.0
NW Corner of Briar Ridge Ln.	C-7	-	0	0	-	-	-	0	-	-	-	-	-	0	0	0.0	0.0	0.0
Brier Ridge Ln. & Trail Entrance	C-8	-	0	0	-	-	-	0	-	-	-	-	-	0	0	0.0	0.0	0.0
SW Corner of Ridgeway Dr.	C-9	0	0	0	< 2	-	-	0	-	-	0	-	-	0	0	0.0	0.5	0.3
Napier & Last Drive	C-10	0	-	-	0	-	-	-	-	-	0	0	-	0	-	0.0	0.0	0.0
Salem Rd. & Jessica J Ln	C-11	-	-	-	-	-	-	-	-	-	0	< 2	-	-	0.0	2.0	1.0	
6 Mile & Pearl Street	C-12	-	-	-	-	0	0	-	0	< 2	-	0	0	-	-	0.7	0.0	0.3
Tamarack Trail	C-13	0	0	0	0	-	-	0	-	-	0	-	-	0	0	0.0	0.0	0.0
Starlite Run	C-14	0	0	0	0	-	-	0	-	-	0	-	-	0	0	0.0	0.0	0.0
Northstar Way	C-15	-	0	0	-	-	-	0	-	-	-	-	-	0	0	0.0	0.0	0.0
Northville High School	C-16	-	0	0	-	-	-	0	-	-	-	-	-	-	-	0.0	0.0	0.0
17877 Briar Ridge	C-20	-	0	< 2	-	-	-	0	-	-	-	-	-	0	1.0	0.0	0.5	
Seven Mile & Ridge Road	C-21	-	0	0	-	-	-	0	-	-	-	-	-	0	0.0	0.0	0.0	
Seven Mile & Napier Road	C-22	-	0	0	-	-	-	0	-	-	-	-	-	0	0.0	0.0	0.0	
Ridgewood Ct. & Mulberry Way	C-23	0	0	0	< 2	-	-	0	-	-	0	-	-	0	< 2	7.0	1.0	0.5
16446 Johnson Creek Drive	C-24	0	0	0	0	-	-	< 2	-	-	0	-	-	0	-	0.7	0.0	0.3
Upwind Scentometer Readings																		
Mulberry Ct. & Mulberry Way	C-1	-	-	-	-	0	0	-	0	0	-	0	< 2	-	-	0.0	0.7	0.3
Boulder & Parkside Dr.	C-2	-	-	-	-	0	0	-	0	0	-	0	0	-	-	0.0	0.0	0.0
Entrance to Steeplechase	C-3	-	-	-	-	0	0	-	0	0	-	0	0	-	-	0.0	0.0	0.0
Ridgewood Elementary School	C-4	-	-	-	-	0	0	-	0	0	-	0	0	-	-	0.0	0.0	0.0
Waterway Park on Ridgeway	C-5	0	-	-	0	0	0	-	0	0	0	0	0	0	-	0.0	0.0	0.0
Bayberry Way & Rose Terrace	C-6	0	-	-	0	0	0	-	0	0	0	0	0	-	-	0.0	0.0	0.0
NW Corner of Briar Ridge Ln.	C-7	0	-	-	0	0	0	-	0	0	0	0	0	-	-	0.0	0.0	0.0
Brier Ridge Ln. & Trail Entrance	C-8	0	-	-	0	0	0	-	0	0	0	0	0	0	-	0.0	0.0	0.0
SW Corner of Ridgeway Dr.	C-9	-	-	-	-	0	0	-	0	0	-	0	0	-	-	0.0	0.0	0.0
Napier & Last Drive	C-10	-	0	0	-	0	0	0	0	0	-	0	0	-	0	0.0	0.0	0.0
Salem Rd. & Jessica J Ln	C-11	0	0	0	0	0	0	0	0	0	0	-	-	0	0	0.0	0.0	0.0
6 Mile & Pearl Street	C-12	0	0	0	0	-	-	0	-	-	0	-	-	0	0	0.0	0.0	0.0
Tamarack Trail	C-13	-	-	-	-	0	0	-	0	0	-	0	0	-	-	0.0	0.0	0.0
Starlite Run	C-14	-	-	-	-	0	0	-	0	0	-	0	0	-	-	0.0	0.0	0.0
Northstar Way	C-15	0	-	-	0	0	0	-	0	0	0	0	0	-	-	0.0	0.0	0.0
Northville High School	C-16	0	-	-	0	0	0	-	0	0	0	0	0	0	0	0.0	0.0	0.0
17877 Briar Ridge	C-20	0	-	-	0	0	0	-	0	0	0	0	0	-	-	0.0	0.0	0.0
Seven Mile & Ridge Road	C-21	0	-	-	0	0	0	-	0	0	0	0	0	-	-	0.0	0.0	0.0
Seven Mile & Napier Road	C-22	0	-	-	0	0	0	-	0	0	0	0	0	-	-	0.0	0.0	0.0
Ridgewood Ct. & Mulberry Way	C-23	-	-	-	-	0	0	-	0	0	-	0	0	-	-	0.0	0.0	0.0
16446 Johnson Creek Drive	C-24	-	-	-	-	0	0	-	0	0	-	0	0	-	-	0.0	0.0	0.0

Landfill Gas
 Fresh Garbage
 Compost
 Leachate
 Other (non landfill related odor)

12/11/18 a.m. - P-5/P-9 - Asphalt/Tar
 12/13/18 a.m. - P-4 - Asphalt/Tar
 12/15/18 p.m. - C-1 - Laundry Detergent; C-11 - Wood Smoke

Number of Odor Complaints	12-10 Mon	12-11 Tue	12-12 Wed	12-13 Thu	12-14 Fri	12-15 Sat	12-16 Sun
	1	3	1	7	2	0	28



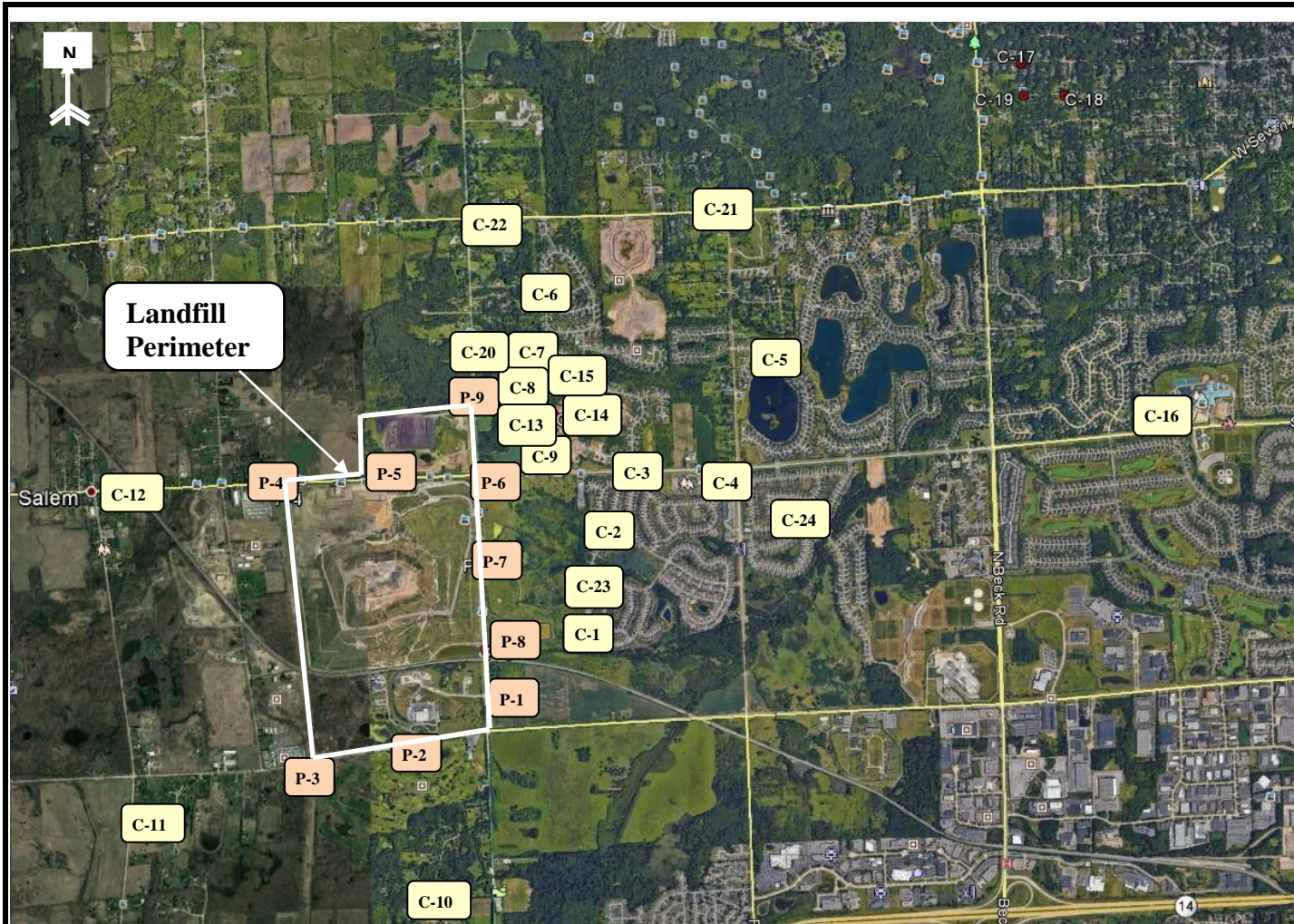
Arbor Hills Landfill
Weekly Perimeter Locations Scentometer Readings
December 10-December 16, 2018

Locations	12-10 Mon		12-11 Tue		12-12 Wed		12-13 Thu		12-14 Fri		12-15 Sat		12-16 Sun		Average			
	a.m.	p.m.	a.m.	p.m.	a.m.	p.m.	a.m.	p.m.	a.m.	p.m.	a.m.	p.m.	a.m.	p.m.	a.m.	p.m.	All	
Wind Direction	NW	S/SSW	SW	NW	SE	SE/SSE	W/WSW	SSE	ESE	NW	NNE/NE	NE	N/NW	W/SSW				
Downwind Scentometer Readings																		
Napier Rd & Entrance to GLR	P-1	<2	0	0	<2	-	-	0	-	-	0	-	-	0	0	0.5	0.5	0.5
5 Mile Rd & Entr to Energy Ctr.	P-2	0	-	-	<2	-	-	-	-	0	0	0	<2	-	0.7	0.7	0.7	
5 Mile Rd & Utility Corridor	P-3	-	-	-	-	-	-	-	-	-	0	0	-	-	0.0	0.0	0.0	
6 Mile Rd & NW Corner of LF	P-4	-	-	-	<2	<2	-	-	0	-	0	0	-	-	0.7	1.0	0.8	
6 Mile Rd & LF Office	P-5	0	<2	<2	0	0	0	<2	0	0	<2	0	0	0	0.6	0.6	0.6	
6 Mile Rd & Napier Rd	P-6	0	0	0	<2	-	0	<2	0	-	0	-	-	0	0.5	0.3	0.4	
Napier & Private Road	P-7	<2	0	0	<2	-	-	<2	-	-	0	-	-	0	<2	1.0	1.0	1.0
Napier & Railroad	P-8	0	0	0	<2	-	-	<2	-	-	0	-	-	0	0.5	0.5	0.5	
Napier & Entr to Composting	P-9	-	0	<2	-	-	-	0	-	-	-	-	-	0	1.0	0.0	0.5	
Upwind Scentometer Readings																		
Napier Rd & Entrance to GLR	P-1	-	-	-	0	0	-	0	0	-	0	0	-	-	0.0	0.0	0.0	
5 Mile Rd & Entr to Energy Ctr.	P-2	-	0	0	-	0	0	0	0	-	-	-	-	0	0.0	0.0	0.0	
5 Mile Rd & Utility Corridor	P-3	0	0	0	0	0	0	0	0	0	-	-	0	0	0.0	0.0	0.0	
6 Mile Rd & NW Corner of LF	P-4	0	0	0	0	-	-	0	<2	-	0	-	0	0	0.0	0.4	0.2	
6 Mile Rd & LF Office	P-5	-	-	-	-	-	-	-	-	-	-	-	-	-	-	-	-	
6 Mile Rd & Napier Rd	P-6	-	-	-	-	0	-	-	-	0	-	0	0	-	0.0	0.0	0.0	
Napier & Private Road	P-7	-	-	-	-	0	0	-	0	0	0	0	-	-	0.0	0.0	0.0	
Napier & Railroad	P-8	-	-	-	-	0	0	-	0	0	-	0	0	-	0.0	0.0	0.0	
Napier & Entr to Composting	P-9	0	-	-	0	0	0	-	<2	0	0	0	0	0	0.0	0.4	0.2	

Landfill Gas
 Fresh Garbage
 Compost
 Leachate
 Other (non landfill related odor)

12/11/18 a.m. - P-5/P-9 - Asphalt/Tar
 12/13/18 a.m. - P-4 - Asphalt/Tar
 12/15/18 p.m. - C-1 - Laundry Detergent; C-11 - Wood Smoke

Number of Odor Complaints	12-10 Mon	12-11 Tue	12-12 Wed	12-13 Thu	12-14 Fri	12-15 Sat	12-16 Sun
	1	3	1	7	2	0	28



RK No	Location
Perimeter	
P-1	Napier Rd & Entrance to GLR
P-2	5 Mile Rd & Entr to Energy Ctr.
P-3	5 Mile Rd & Utility Corridor
P-4	6 Mile Rd & NW Corner of LF
P-5	6 Mile Rd & LF Office
P-6	6 Mile Rd & Napier Rd
P-7	Napier & Private Road
P-8	Napier & Railroad
P-9	Napier & Entr to Composting
Community	
C-1	Mulberry Ct. & Mulberry Way
C-2	Boulder & Parkside Dr.
C-3	Entrance to Steeplechase
C-4	Ridgewood Elementary School
C-5	Waterway Park on Ridgeway Dr.
C-6	Bayberry Way & Rose Terrace
C-7	NW Corner of Briar Ridge Ln.
C-8	Brier Ridge Ln. & Trail Entrance
C-9	SW Corner of Ridgeway Dr.
C-10	Napier & Last Drive
C-11	Salem Rd. & Jessica J Ln
C-12	6 Mile & Pearl Street
C-13	Tamarack Trail
C-14	Starlite Run
C-15	Northstar Way
C-16	Northville High School
C-20	17877 Briar Ridge
C-21	Seven Mile & Ridge Road
C-22	Napier & Seven Mile Road
C-23	Ridgewood Ct. & Mulberry Way
C-24	16446 Johnson Creek Drive

 28631 ROUTE 59, SUITE B WARRENVILLE, IL 60555 630-333-0000 630-790-2966	COMMENTS: Perimeter and Community Odor Monitoring Location		Arbor Hills Landfill Advanced Disposal Northville, MI 48168		FIGURE 1
	DRAWN BY: DD	APPROVED BY: SR	PROJECT NUMBER: R16417	DATE DRAWN: 11-16-2016	REVISED DATE: 09-04-2018