

DEPARTMENT OF ENVIRONMENTAL QUALITY
AIR QUALITY DIVISION
ACTIVITY REPORT: On-site Inspection

N761469251

FACILITY: SHAHEEN CHEVROLET INC.		SRN / ID: N7614
LOCATION: 3901 MARTIN LUTHER KING BLVD, LANSING		DISTRICT: Lansing
CITY: LANSING		COUNTY: INGHAM
CONTACT: Juan Hernandez , Facilities Manager		ACTIVITY DATE: 08/22/2023
STAFF: Michelle Luplow	COMPLIANCE STATUS: Compliance	SOURCE CLASS: MINOR
SUBJECT: Onsite compliance inspection to determine compliance with PTI 138-06 for a mercury bulb crusher.		
RESOLVED COMPLAINTS:		

Inspected by: Michelle Luplow

Personnel Present: Nick Howland, Maintenance (nhowland@shaheenchevrolet.com)

Offsite Personnel: Juan Hernandez, Facilities Manager (jhernandez@shaheenautogroup.com)

Purpose

Conduct an unannounced onsite compliance inspection by determining Shaheen Chevrolet's compliance with Michigan Air Pollution Control Rules and PTI No. 138-06 for a drum top mercury bulb crusher. This facility was last inspected in February 2009.

Facility Background/Regulatory Overview

Shaheen Chevrolet is an auto collision center. Their body shop does repair, priming, and paint work on cars and car parts. They operate 5 paint booths for this purpose.

Inspection

On August 22, 2023, at approximately 1:14 p.m., I arrived at Shaheen Chevrolet's body shop.

Upon arrival, I noted what appeared to be grayish opacity emitting from the paint booth stack located at the farthest east corner of the building (see attached photo). Opacity appeared to be emitted for 5-8 minutes before ceasing

I made contact with Nick Howland, Maintenance Manager, onsite and explained what I saw. He said that the stack is associated with a paint booth, so I asked him if we could take a look at this booth from the inside. He guided me to the booth, where we found the door closed, painting no longer occurring, and 2 parts in the booth were undergoing a curing stage (the booths are able to be heated for this purpose). One of the parts in the booth was coated with a gray paint, similar to the color I saw emitting out of the paint booth stack.

Particulate emitting from the stack is an indicator that the paint booth filters were not installed properly. I was unable to enter the booth to check filter installation, as I did not want to interfere with the paint-curing process; however, I had asked N. Howland to provide me with before and after photos of the filters for this booth when they next get serviced. N. Howland said that an outside contractor services the booths monthly, generally the first week of every month. He said that he would provide this information to me after the contractors serviced the paint booths at the beginning of September. I informed him that although contractors are doing the work, it is Shaheen Chevrolet's responsibility to ensure the filters are installed properly in order to prevent particulate from emitting outside.

N. Howland said there are floor filters and additional filters installed in the stack floor to filter out particulate from the exhaust stream. He said Shaheen Collisions uses only water-based coatings.

On September 14, 2023, Juan Hernandez, Facilities Manager, sent me before and after photos of the floor filters and the stack filters for the booth in question, as well as documentation describing the types of filters they install in the booths (see attached). Based on the photos provided, two filters are used to cover the opening in the floor. The filters slightly overlap each other. A metal grate is then placed over the filters. The filters in the stack are installed in a similar fashion – two filters, slightly overlapping each other, which a grate placed over top of them. The pre-filter changeout photos appear to indicate that the filters were installed properly in both the floor and the stack exhaust; however, the new filter installations appear to be installed in a way that there are gaps around the outside edges. I have brought this issue to J. Hernandez's attention. Shaheen Chevrolet must ensure that the filter edges are flush or overlapping the exhaust air flow openings. Future inspections may be warranted to check floor filter installations are adequate. AQD will take note the stacks when in the area, pending a future inspection.

PTI No 138-06

PTI 138-06 covers a mercury bulb drum-top crusher. I had a call with J. Hernandez on April 24, 2023 where he explained that they still had the unit, but that it is no longer being used and is kept in storage; since he has been at the facility (2 years) they haven't used it. He said most of the bulbs they get from cars are LED, but in the event they run across any mercury bulbs, he says those are shipped to Cleanlites, a mercury bulb crusher facility, located in Mason, MI.

While onsite, N. Howland showed me where the drum-top bulb crusher is stored. He had to move some large, bulky objects out of the way for me to see it, indicating that the unit is, in fact, being stored and is not being used (see attached photo). The unit appeared to be completely intact.

N. Howland said it's possible there still may be crushed bulbs in the unit, and is considering getting rid of it as Shaheen Chevrolet no longer has a use for it. N. Howland asked how they would go about disposing of the entire unit in the proper way to ensure environmental compliance. I have reached out to EGLE's Materials Management Division (MMD) for assistance with this, and I will provide an answer to N. Howland regarding MMD's recommendations for proper disposal of the unit.

Although the unit is not being used, AQD will keep PTI 138-06 active until Shaheen Chevrolet informs the division that the equipment has been permanently removed from the site. Once the AQD has confirmed the unit has been permanently removed, PTI 138-06 can be voided.

Compliance Statement: At this time Shaheen Chevrolet appears to be in compliance with all state and federal regulations.



Image 1(Hg Bulb Crusher) : Bulb crusher is located in storage.



Image 2(Used filters) : Photo of filter prior to changeout



Image 3(Other used filter) : Photo of filters taken prior to changeout.



Image 4(New filter) : New filters installed. Note gaps around edges of exhaust vent.

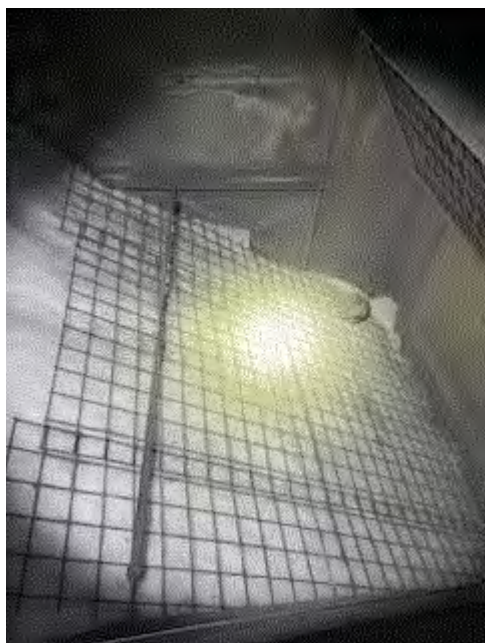


Image 5(Stack filters) : New filters installed inside stack.

NAME Michelle Luplow

DATE 9/28/23

SUPERVISOR RB

FLOOR FILTERS



Best Spray Booth Overspray Arrestor!

Paint Pockets® is the best performing, single-stage overspray arrestor, bar none. Paint Pockets excels in arresting both liquid and powder coating overspray generated in industrial, automotive, and aerospace applications. Paint Pockets knocks down and retains more overspray than any arrestor. It keeps overspray out of your exhaust stack and off the booth floor. Paint Pockets is your best value for production spray booths.

Its unique design holds up to five times more overspray than other filters, enabling you to cut your filter changes by up to 80%. The three-dimensional "pockets" embedded in the front face of Paint Pockets more than double its surface area, allowing the arrestor to capture and hold very large quantities of overspray. Paint Pockets arrestors have superior wet tensile strength. Arrestors loaded with wet overspray do get heavy, but they won't tear or sag.

Paint Pockets arrestors slash disposal costs. Fewer filter changes means less waste. Your savings are significant, particularly if you use hazardous waste processors.

Independent laboratory test reports confirm Paint Pockets excels at capturing the very small 2.5 to 10 micron particles that typify overspray produced in most spray finishing operations. The arrestor effectively captures and retains these particles, preventing them from contaminating downstream equipment. Paint Pockets removes far more particles from the booth exhaust than any other high performance, single-stage overspray arrestor.

Its 99.84% arrestance efficiency means only 0.16% of the overspray actually penetrates the arrestor. At first glance, Filter X, a competitive arrestor, with a 99.5% overall arrestance efficiency might seem comparable. In reality though, three times as much overspray penetrates Filter X.

More importantly, Paint Pockets captures more of the smaller particulates than any other single-stage arrestor. The Fractional Arrestance Efficiency chart shows Paint Pockets arrests smaller overspray particulates that penetrate other arrestors.

Its unique pockets enable Paint Pockets to accumulate significant quantities of overspray before it begins to noticeably restrict booth airflow. This feature permits you to "tune" your entire finishing process for maximum transfer efficiency and, more importantly, to operate in the optimum efficiency zone. Increased transfer efficiency means more parts coated per quantity sprayed and longer intervals between filter changes. A higher percentage of the finish is coating parts instead of the arrestors.

Paint Pockets now only removes overspray from your booth's exhaust air stream, its pockets assist in retaining overspray with the arrestor. Reduced run-off means less booth floor clean-up and quicker filter changes.

You get up to an 80% reduction in filter changes, a corresponding reduction in waste disposal costs, more than a 50% reduction in backsection and exhaust stack cleanouts, significantly less runoff, and improved transfer efficiency - all in an easy-to-change, user-friendly, polyester filter.

Paint Pockets is the most effective and most economical way to manage the overspray produced by common coatings including medium and high solids paints, powder coatings, water reduced paints, plural component coatings, stains, and adhesives.

Paint Pockets overspray arrestor is the best single-stage arrestor technology currently available for production spray booths. It is the lowest total cost solution for responsible overspray management.

Overall Arrestance Efficiency:	99.84%
Fractional Arrestance Efficiency	
20 microns	100.0%

to see the
results of the *Paint
Arrestance Filter Test.*

to see the
results of the *Fractional
Efficiency Test.*

WANTED

Click here to find out how to save 50% off the Paint Pockets Zipper Mounting Hardware by participating in our Bounty Program for Booth Conversions.

REWARD

to find out how converting your booth from pads to rolls can save your company money, and how Paint Pockets® makes the process easy.

10 microns	99.8%
5 microns	84.5%
2.5 microns	4.2%
Holding Capacity	Up to 6 lbs/sq ft
Maximum Tested Air Velocity	700 FPM
Initial Pressure Drop (@100 FPM)	0.06 in W.C.
Maximum Pressure Drop	1.00 in W.C.
Flammability Rating	UL Class II
Filter Construction	High Loft, Multi-Ply, Non-woven Polyester

European Patent No. 0724473

U.S. Patent No. 6,071,419

Paint Pockets Co. is committed to the continued improvement of its products and processes. Therefore, specific specifications are subject to change without advance notice.

To reduce your spray booth operating costs, while still improving performance, contact your local Paint Pockets distributor or call Toll Free **1-877-768-7588** to find the distributor in your area.

Part No.	Description	Quantity per Case
PP-020-020-030	20" x 20" Pads	30 / Case
PP-020-025-030	20" x 25" Pads	30 / Case
PP-024-050-001	24" x 50' Blanket	1 / Pkg.
PP-030-050-001	30" x 50' Blanket	1 / Pkg.
PP-036-050-001	36" x 50' Blanket	1 / Pkg.
PP-040-050-001	40" x 50' Blanket	1 / Pkg.
PP-045-050-001	45" x 50' Blanket	1 / Pkg.
PP-048-050-001	48" x 50' Blanket	1 / Pkg.
PP-060-050-001	60" x 50' Blanket	1 / Pkg.

Special sizes are available when ordered in sufficient quantities.

for more information.



©2023 Paint Pockets Company • 915 North 43rd Avenue, Omaha, NE 68131
 Phone: Toll Free 877-768-7587 • Fax: Toll Free 877-768-7588 • Email: info@paintpockets.com

**DIAMOND
POCKET**